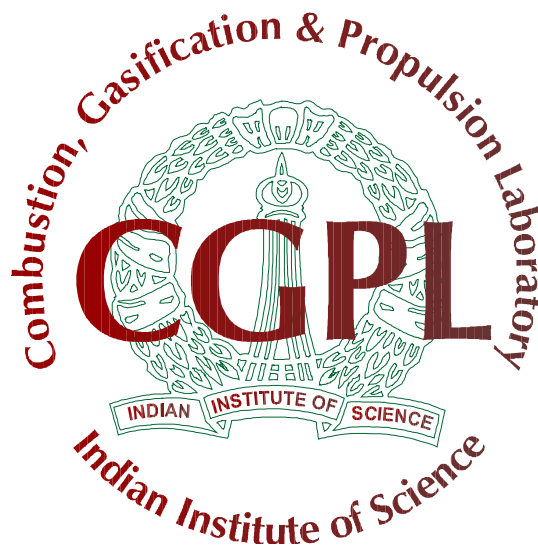


Biomass Mapping for Power Generation for Himachal Pradesh

Biomass Manual



Combustion, Gasification & Propulsion Laboratory (CGPL)
Department of Aerospace Engineering
Indian Institute of Science
Bangalore 560 012

Biomass Assessment for Himachal Pradesh for Kharif, Rabi, Yearly and Agro



Biomass Assessment for Himachal Pradesh

1. Kharif

a. State-level Residue-wise-----	01
b. State-level District-wise-----	02
c. State-level Taluk-wise-----	02
d. District-level Residue-wise-----	04
e. District-level-Taluk-wise-----	08
f. Taluk-level Residue-wise-----	12

2. Rabi

a. State-level Residue-wise-----	28
b. State-level District-wise-----	29
c. State-level Taluk-wise-----	29
d. District-level Residue-wise-----	31
e. District-level-Taluk-wise-----	34
f. Taluk-level Residue-wise-----	37

3. Yearly

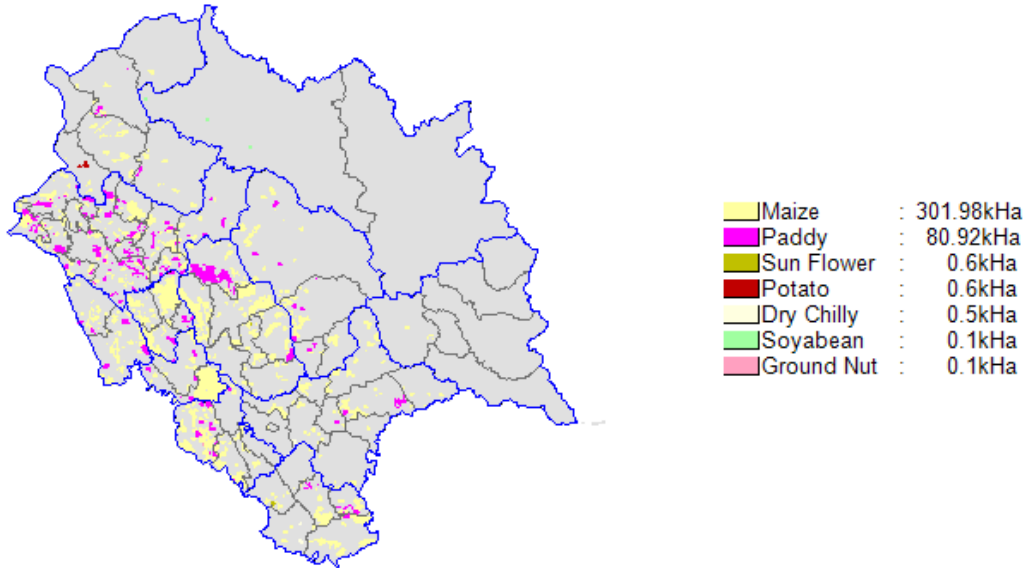
a. State-level Residue-wise-----	51
b. State-level District-wise-----	52
c. State-level Taluk-wise-----	52
d. District-level Residue-wise-----	53
e. District-level-Taluk-wise-----	54
f. Taluk-level Residue-wise-----	56

4. Agro

a. State-level Residue-wise-----	59
b. State-level District-wise-----	59
c. State-level Taluk-wise-----	60
d. District-level Residue-wise-----	62
e. District-level-Taluk-wise-----	66
f. Taluk-level Residue-wise-----	70

Kharif

Himachal Pradesh-Kharif



State Level Residue Wise

State level Residue-wise Data for Himachal Pradesh; Season : Kharif						
Crop	Residue	Area (kHa)	Crop Production (kT/Yr)	Biomass Generation (kT/Yr)	Biomass Surplus (kT/Yr)	Power Potential (MWe)
Maize	Stalks	302.0	686.4	1372.9	549.2	71.4
Maize	Cobs	302.0	686.4	343.2	171.6	24.0
Paddy	Straw	80.9	121.5	182.2	145.7	16.0
Paddy	Husk	80.9	121.5	24.3	19.4	2.1
Potato	Leaves	0.61	5.5	4.2	0.42	0.058
Others	Others	1.3	1.5	3.1	0.36	0.047
Total		384.8	814.9	1929.9	886.7	113.7

State Level District Wise

State level District-wise Data for Himachal Pradesh ; Season : Kharif					
District	Area (kHa)	Crop Production (kT/Yr)	Biomass Generation (kT/Yr)	Biomass Surplus (kT/Yr)	Power Potential (MWe)
Mandi	68.4	169.5	398.4	187.0	23.8
Kangra	96.6	155.5	346.0	179.7	22.2
Sirmaur	30.7	87.1	211.0	93.9	12.2
Una	32.3	68.0	165.1	73.2	9.5
Hamirpur	34.7	63.8	156.3	68.2	8.9
Chamba	28.9	68.6	159.0	68.0	8.9
Solan	27.9	59.0	142.3	63.9	8.3
Bilaspur	28.0	54.3	133.7	57.7	7.6
Kullu	16.8	45.5	112.1	48.5	6.4
Shimla	20.1	42.5	103.5	45.6	5.9
Kinnaur	0.41	0.91	2.3	0.96	0.13
Lahul & Spiti	0.11	0.18	0.30	0.030	0.0039
Total	384.8	814.9	1929.9	886.7	113.7

State Level Taluk Wise

State level Taluk-wise Data for Himachal Pradesh ; Season : Kharif						
District	Taluk	Area (kHa)	Crop Production (kT/Yr)	Biomass Generation (kT/Yr)	Biomass Surplus (kT/Yr)	Power Potential (MWe)
Mandi	Sarkaghat	17.2	50.2	125.5	52.7	7.0
Una	Una	23.1	48.6	118.7	52.2	6.8
Bilaspur	Bilaspur	23.9	46.3	114.5	49.1	6.4
Mandi	Jogindarnagar	23.2	41.6	81.8	52.2	6.1
Sirmaur	Paonta	12.4	38.2	94.8	40.4	5.3
Chamba	Chamba	16.2	37.7	94.2	39.6	5.2
Solan	Nalagarh	17.4	36.3	85.7	40.0	5.1
Mandi	Mandi	12.6	36.7	91.6	38.4	5.1
Kangra	Dera Gopipur	18.4	28.5	57.8	35.1	4.1
Hamirpur	Hamirpur	15.7	29.2	72.6	30.8	4.1
Kullu	Banjar	10.3	28.6	70.7	30.3	4.0

District	Taluk	Area (kHa)	Crop Production (kT/Yr)	Biomass Generation (kT/Yr)	Biomass Surplus (kT/Yr)	Power Potential (MWe)
Kangra	Kangra	16.4	27.0	62.6	30.0	3.8
Kangra	Nurpur	14.8	24.0	54.1	27.4	3.4
Kangra	Jawali	13.6	22.8	54.9	24.7	3.2
Sirmaur	Shilla	8.2	21.1	49.3	23.6	3.0
Hamirpur	Nadaun	10.6	19.7	49.2	20.7	2.7
Una	Amb	9.2	19.3	46.4	21.0	2.7
Mandi	Thunag	7.0	17.6	41.6	19.4	2.5
Sirmaur	Renuka	6.2	16.3	38.5	18.1	2.3
Shimla	Rohru	7.9	14.9	34.7	16.7	2.1
Solan	Kasauli	6.3	13.6	34.0	14.3	1.9
Kangra	Indora	8.2	12.6	25.3	15.6	1.8
Chamba	Bhamaur	5.8	12.9	31.3	13.8	1.8
Hamirpur	Barsar	6.7	12.3	30.0	13.2	1.7
Kullu	Kullu	4.5	12.0	29.5	12.9	1.7
Mandi	Chachyot	4.2	11.8	29.2	11.9	1.6
Kangra	Palampur	6.7	10.9	24.9	12.4	1.5
Kangra	Dharmshala	5.5	9.3	22.8	9.9	1.3
Mandi	Karsog	2.9	8.4	20.9	8.8	1.2
Sirmaur	Pachhad	2.7	8.4	21.0	8.8	1.2
Bilaspur	Ghumarwin	4.2	8.0	19.3	8.7	1.1
Chamba	Chaurah	4.1	7.6	16.7	9.0	1.1
Kangra	Jaisinghpur	4.3	7.1	16.2	8.0	1.0
Shimla	Rampur	3.1	7.1	17.8	7.5	0.99
Kangra	Baroh	4.5	6.6	11.5	8.8	0.98
Shimla	Suni	2.4	5.5	13.7	5.8	0.76
Shimla	Kumharsain	2.3	5.3	13.2	5.6	0.74
Solan	Solan	2.1	4.5	11.2	4.7	0.62
Chamba	Bhattiyat	2.2	9.1	13.4	4.2	0.56
Kangra	Jaswan	2.3	3.9	9.4	4.3	0.55
Kullu	Nermand	1.3	3.8	9.6	4.0	0.53
Mandi	Sundar Nagar	1.4	3.3	7.8	3.7	0.47
Kangra	Baijnath	1.8	3.0	6.6	3.4	0.42
Shimla	Theog	1.5	3.1	7.6	3.1	0.42
Solan	Kandaghat	1.4	3.0	7.4	3.1	0.41
Hamirpur	Bhoranj	1.6	2.6	4.4	3.5	0.39
Shimla	Chaupal	1.1	2.5	6.4	2.7	0.35
Shimla	Chirgaon	0.88	2.0	5.0	2.1	0.28

District	Taluk	Area (kHa)	Crop Production (kT/Yr)	Biomass Generation (kT/Yr)	Biomass Surplus (kT/Yr)	Power Potential (MWe)
Sirmaur	Nahan	0.84	1.8	4.4	1.8	0.24
Solan	Arki	0.79	1.7	4.1	1.8	0.23
Sirmaur	Rajgarh	0.37	1.2	3.0	1.2	0.16
Kullu	Ani	0.59	1.1	2.3	1.3	0.16
Kinnaur	Nichar	0.41	0.91	2.3	0.96	0.13
Shimla	Shimla Urban	0.38	0.88	2.2	0.92	0.12
Chamba	Pangi	0.31	0.73	1.8	0.76	0.10
Shimla	Kotkhai	0.32	0.63	1.5	0.69	0.089
Chamba	Saluni	0.28	0.64	1.6	0.67	0.089
Shimla	Jubbal	0.18	0.40	1.0	0.42	0.056
Shimla	Shimla Rural	0.065	0.12	0.29	0.12	0.016
Lahul & Spiti	Lahul	0.11	0.18	0.30	0.030	0.0039
Total		384.8	814.9	1929.9	886.7	113.7

District Level Residue Wise

District level Residue-wise Data for Bilaspur; Season : Kharif						
Crop	Residue	Area (kHa)	Crop Production (kT/Yr)	Biomass Generation (kT/Yr)	Biomass Surplus (kT/Yr)	Power Potential (MWe)
Maize	Stalks	26.5	51.8	103.7	41.5	5.4
Maize	Cobs	26.5	51.8	25.9	13.0	1.8
Paddy	Straw	1.5	2.4	3.7	2.9	0.32
Others	Others	0	0	0.49	0.39	0.043
Total		28.0	54.3	133.7	57.7	7.6

District level Residue-wise Data for Chamba; Season : Kharif						
Crop	Residue	Area (kHa)	Crop Production (kT/Yr)	Biomass Generation (kT/Yr)	Biomass Surplus (kT/Yr)	Power Potential (MWe)
Maize	Stalks	25.4	59.0	118.1	47.2	6.1
Maize	Cobs	25.4	59.0	29.5	14.8	2.1
Paddy	Straw	2.9	4.1	6.1	4.9	0.54
Paddy	Husk	2.9	4.1	0.82	0.65	0.072
Potato	Leaves	0.61	5.5	4.2	0.42	0.058
Others	Others	0	0	0.27	0.055	0.0071
Total		28.9	68.6	159.0	68.0	8.9

District level Residue-wise Data for Hamirpur; Season : Kharif						
Crop	Residue	Area (kHa)	Crop Production (kT/Yr)	Biomass Generation (kT/Yr)	Biomass Surplus (kT/Yr)	Power Potential (MWe)
Maize	Stalks	32.1	59.8	119.5	47.8	6.2
Maize	Cobs	32.1	59.8	29.9	14.9	2.1
Paddy	Straw	2.5	4.0	6.0	4.8	0.53
Paddy	Husk	2.5	4.0	0.81	0.64	0.071
Total		34.7	63.8	156.3	68.2	8.9

District level Residue-wise Data for Kangra; Season : Kharif						
Crop	Residue	Area (kHa)	Crop Production (kT/Yr)	Biomass Generation (kT/Yr)	Biomass Surplus (kT/Yr)	Power Potential (MWe)
Maize	Stalks	59.7	102.0	204.0	81.6	10.6
Paddy	Straw	36.8	53.3	80.0	64.0	7.0
Maize	Cobs	59.7	102.0	51.0	25.5	3.6
Paddy	Husk	36.8	53.3	10.7	8.5	0.94
Others	Others	0.10	0.20	0.40	0.040	0.0052
Total		96.6	155.5	346.0	179.7	22.2

District level Residue-wise Data for Kinnaur; Season : Kharif						
Crop	Residue	Area (kHa)	Crop Production (kT/Yr)	Biomass Generation (kT/Yr)	Biomass Surplus (kT/Yr)	Power Potential (MWe)
Maize	Stalks	0.41	0.91	1.8	0.73	0.095
Others	Others	0	0	0.46	0.23	0.032
Total		0.41	0.91	2.3	0.96	0.13

District level Residue-wise Data for Kullu; Season : Kharif						
Crop	Residue	Area (kHa)	Crop Production (kT/Yr)	Biomass Generation (kT/Yr)	Biomass Surplus (kT/Yr)	Power Potential (MWe)
Maize	Stalks	15.0	43.3	86.6	34.6	4.5
Maize	Cobs	15.0	43.3	21.6	10.8	1.5
Paddy	Straw	1.7	2.2	3.4	2.7	0.30
Others	Others	0	0	0.45	0.36	0.039
Total		16.8	45.5	112.1	48.5	6.4

District level Residue-wise Data for Lahul & Spiti; Season : Kharif						
Crop	Residue	Area (kHa)	Crop Production (kT/Yr)	Biomass Generation (kT/Yr)	Biomass Surplus (kT/Yr)	Power Potential (MWe)
Others	Others	0.11	0.18	0.30	0.030	0.0039
Total		0.11	0.18	0.30	0.030	0.0039

District level Residue-wise Data for Mandi; Season : Kharif						
Crop	Residue	Area (kHa)	Crop Production (kT/Yr)	Biomass Generation (kT/Yr)	Biomass Surplus (kT/Yr)	Power Potential (MWe)
Maize	Stalks	47.2	137.6	275.1	110.1	14.3
Maize	Cobs	47.2	137.6	68.8	34.4	4.8
Paddy	Straw	20.8	31.2	46.8	37.4	4.1
Paddy	Husk	20.8	31.2	6.2	5.0	0.55
Others	Others	0.41	0.71	1.4	0.14	0.019
Total		68.4	169.5	398.4	187.0	23.8

District level Residue-wise Data for Shimla; Season : Kharif						
Crop	Residue	Area (kHa)	Crop Production (kT/Yr)	Biomass Generation (kT/Yr)	Biomass Surplus (kT/Yr)	Power Potential (MWe)
Maize	Stalks	17.0	39.0	78.1	31.2	4.1
Maize	Cobs	17.0	39.0	19.5	9.8	1.4
Paddy	Straw	3.0	3.4	5.0	4.0	0.44
Paddy	Husk	3.0	3.4	0.67	0.54	0.059
Others	Others	0.20	0.10	0.15	0.015	0.0020
Total		20.1	42.5	103.5	45.6	5.9

District level Residue-wise Data for Sirmaur; Season : Kharif						
Crop	Residue	Area (kHa)	Crop Production (kT/Yr)	Biomass Generation (kT/Yr)	Biomass Surplus (kT/Yr)	Power Potential (MWe)
Maize	Stalks	24.8	78.6	157.2	62.9	8.2
Maize	Cobs	24.8	78.6	39.3	19.7	2.8
Paddy	Straw	5.5	8.3	12.5	10.0	1.1
Paddy	Husk	5.5	8.3	1.7	1.3	0.15
Others	Others	0.40	0.20	0.35	0.035	0.0046
Total		30.7	87.1	211.0	93.9	12.2

District level Residue-wise Data for Solan; Season : Kharif						
Crop	Residue	Area (kHa)	Crop Production (kT/Yr)	Biomass Generation (kT/Yr)	Biomass Surplus (kT/Yr)	Power Potential (MWe)
Maize	Stalks	24.3	52.4	104.8	41.9	5.5
Maize	Cobs	24.3	52.4	26.2	13.1	1.8
Paddy	Straw	3.5	6.5	9.7	7.8	0.86
Paddy	Husk	3.5	6.5	1.3	1.0	0.11
Others	Others	0.10	0.10	0.23	0.042	0.0052
Total		27.9	59.0	142.3	63.9	8.3

District level Residue-wise Data for Una; Season : Kharif						
Crop	Residue	Area (kHa)	Crop Production (kT/Yr)	Biomass Generation (kT/Yr)	Biomass Surplus (kT/Yr)	Power Potential (MWe)
Maize	Stalks	29.5	62.0	123.9	49.6	6.4
Maize	Cobs	29.5	62.0	31.0	15.5	2.2
Paddy	Straw	2.7	6.0	9.0	7.2	0.79
Paddy	Husk	2.7	6.0	1.2	0.96	0.11
Total		32.3	68.0	165.1	73.2	9.5

District Level Taluk Wise

DistrictLevel Taluk-wise Data for Bilaspur ; Season : Kharif					
Taluk	Area (kHa)	Crop Production (kT/Yr)	Biomass Generation (kT/Yr)	Biomass Surplus (kT/Yr)	Power Potential (MWe)
Bilaspur	23.9	46.3	114.5	49.1	6.4
Ghumarwin	4.2	8.0	19.3	8.7	1.1
Total	28.0	54.3	133.7	57.7	7.6

DistrictLevel Taluk-wise Data for Chamba ; Season : Kharif					
Taluk	Area (kHa)	Crop Production (kT/Yr)	Biomass Generation (kT/Yr)	Biomass Surplus (kT/Yr)	Power Potential (MWe)
Chamba	16.2	37.7	94.2	39.6	5.2
Bhamaur	5.8	12.9	31.3	13.8	1.8
Chaurah	4.1	7.6	16.7	9.0	1.1
Bhattiyat	2.2	9.1	13.4	4.2	0.56
Pangi	0.31	0.73	1.8	0.76	0.10
Saluni	0.28	0.64	1.6	0.67	0.089
Total	28.9	68.6	159.0	68.0	8.9

DistrictLevel Taluk-wise Data for Hamirpur ; Season : Kharif					
Taluk	Area (kHa)	Crop Production (kT/Yr)	Biomass Generation (kT/Yr)	Biomass Surplus (kT/Yr)	Power Potential (MWe)
Hamirpur	15.7	29.2	72.6	30.8	4.1
Nadaun	10.6	19.7	49.2	20.7	2.7
Barsar	6.7	12.3	30.0	13.2	1.7
Bhoranj	1.6	2.6	4.4	3.5	0.39
Total	34.7	63.8	156.3	68.2	8.9

DistrictLevel Taluk-wise Data for Kangra ; Season : Kharif					
Taluk	Area (kHa)	Crop Production (kT/Yr)	Biomass Generation (kT/Yr)	Biomass Surplus (kT/Yr)	Power Potential (MWe)
Dera Gopipur	18.4	28.5	57.8	35.1	4.1
Kangra	16.4	27.0	62.6	30.0	3.8
Nurpur	14.8	24.0	54.1	27.4	3.4
Jawali	13.6	22.8	54.9	24.7	3.2
Indora	8.2	12.6	25.3	15.6	1.8
Palampur	6.7	10.9	24.9	12.4	1.5
Dharmshala	5.5	9.3	22.8	9.9	1.3
Jaisinghpur	4.3	7.1	16.2	8.0	1.0
Baroh	4.5	6.6	11.5	8.8	0.98
Jaswan	2.3	3.9	9.4	4.3	0.55
Baijnath	1.8	3.0	6.6	3.4	0.42
Total	96.6	155.5	346.0	179.7	22.2

DistrictLevel Taluk-wise Data for Kinnaur ; Season : Kharif					
Taluk	Area (kHa)	Crop Production (kT/Yr)	Biomass Generation (kT/Yr)	Biomass Surplus (kT/Yr)	Power Potential (MWe)
Nichar	0.41	0.91	2.3	0.96	0.13
Total	0.41	0.91	2.3	0.96	0.13

DistrictLevel Taluk-wise Data for Kullu ; Season : Kharif					
Taluk	Area (kHa)	Crop Production (kT/Yr)	Biomass Generation (kT/Yr)	Biomass Surplus (kT/Yr)	Power Potential (MWe)
Banjar	10.3	28.6	70.7	30.3	4.0
Kullu	4.5	12.0	29.5	12.9	1.7
Nermand	1.3	3.8	9.6	4.0	0.53
Ani	0.59	1.1	2.3	1.3	0.16
Total	16.8	45.5	112.1	48.5	6.4

DistrictLevel Taluk-wise Data for Lahul & Spiti ; Season : Kharif					
Taluk	Area (kHa)	Crop Production (kT/Yr)	Biomass Generation (kT/Yr)	Biomass Surplus (kT/Yr)	Power Potential (MWe)
Lahul	0.11	0.18	0.30	0.030	0.0039
Total	0.11	0.18	0.30	0.030	0.0039

DistrictLevel Taluk-wise Data for Mandi ; Season : Kharif					
Taluk	Area (kHa)	Crop Production (kT/Yr)	Biomass Generation (kT/Yr)	Biomass Surplus (kT/Yr)	Power Potential (MWe)
Sarkaghat	17.2	50.2	125.5	52.7	7.0
Jogindarnagar	23.2	41.6	81.8	52.2	6.1
Mandi	12.6	36.7	91.6	38.4	5.1
Thunag	7.0	17.6	41.6	19.4	2.5
Chachyot	4.2	11.8	29.2	11.9	1.6
Karsog	2.9	8.4	20.9	8.8	1.2
Sundar Nagar	1.4	3.3	7.8	3.7	0.47
Total	68.4	169.5	398.4	187.0	23.8

DistrictLevel Taluk-wise Data for Shimla ; Season : Kharif					
Taluk	Area (kHa)	Crop Production (kT/Yr)	Biomass Generation (kT/Yr)	Biomass Surplus (kT/Yr)	Power Potential (MWe)
Rohru	7.9	14.9	34.7	16.7	2.1
Rampur	3.1	7.1	17.8	7.5	0.99
Suni	2.4	5.5	13.7	5.8	0.76
Kumharsain	2.3	5.3	13.2	5.6	0.74
Theog	1.5	3.1	7.6	3.1	0.42
Chaupal	1.1	2.5	6.4	2.7	0.35
Chirgaon	0.88	2.0	5.0	2.1	0.28
Shimla Urban	0.38	0.88	2.2	0.92	0.12
Kotkhai	0.32	0.63	1.5	0.69	0.089
Jubbal	0.18	0.40	1.0	0.42	0.056
Shimla Rural	0.065	0.12	0.29	0.12	0.016
Total	20.1	42.5	103.5	45.6	5.9

DistrictLevel Taluk-wise Data for Sirmaur ; Season : Kharif					
Taluk	Area (kHa)	Crop Production (kT/Yr)	Biomass Generation (kT/Yr)	Biomass Surplus (kT/Yr)	Power Potential (MWe)
Paonta	12.4	38.2	94.8	40.4	5.3
Shilla	8.2	21.1	49.3	23.6	3.0
Renuka	6.2	16.3	38.5	18.1	2.3
Pachhad	2.7	8.4	21.0	8.8	1.2
Nahan	0.84	1.8	4.4	1.8	0.24
Rajgarh	0.37	1.2	3.0	1.2	0.16
Total	30.7	87.1	211.0	93.9	12.2

DistrictLevel Taluk-wise Data for Solan ; Season : Kharif					
Taluk	Area (kHa)	Crop Production (kT/Yr)	Biomass Generation (kT/Yr)	Biomass Surplus (kT/Yr)	Power Potential (MWe)
Nalagarh	17.4	36.3	85.7	40.0	5.1
Kasauli	6.3	13.6	34.0	14.3	1.9
Solan	2.1	4.5	11.2	4.7	0.62
Kandaghat	1.4	3.0	7.4	3.1	0.41
Arki	0.79	1.7	4.1	1.8	0.23
Total	27.9	59.0	142.3	63.9	8.3

DistrictLevel Taluk-wise Data for Una ; Season : Kharif					
Taluk	Area (kHa)	Crop Production (kT/Yr)	Biomass Generation (kT/Yr)	Biomass Surplus (kT/Yr)	Power Potential (MWe)
Una	23.1	48.6	118.7	52.2	6.8
Amb	9.2	19.3	46.4	21.0	2.7
Total	32.3	68.0	165.1	73.2	9.5

Taluk Level Residue Wise

Taluk level Residue-wise Data for Bilaspur ; Season : Kharif						
Crop	Residue	Area (kHa)	Crop Production (kT/Yr)	Biomass Generation (kT/Yr)	Biomass Surplus (kT/Yr)	Power Potential (MWe)
Maize	Stalks	22.9	44.7	89.5	35.8	4.7
Maize	Cobs	22.9	44.7	22.4	11.2	1.6
Paddy	Straw	0.97	1.5	2.3	1.9	0.20
Others	Others	0	0	0.31	0.25	0.027
Total		23.9	46.3	114.5	49.1	6.4

Taluk level Residue-wise Data for Ghumarwin ; Season : Kharif						
Crop	Residue	Area (kHa)	Crop Production (kT/Yr)	Biomass Generation (kT/Yr)	Biomass Surplus (kT/Yr)	Power Potential (MWe)
Maize	Stalks	3.6	7.1	14.2	5.7	0.74
Maize	Cobs	3.6	7.1	3.5	1.8	0.25
Paddy	Straw	0.56	0.90	1.3	1.1	0.12
Others	Others	0	0	0.18	0.14	0.016
Total		4.2	8.0	19.3	8.7	1.1

Taluk level Residue-wise Data for Bhamaur ; Season : Kharif						
Crop	Residue	Area (kHa)	Crop Production (kT/Yr)	Biomass Generation (kT/Yr)	Biomass Surplus (kT/Yr)	Power Potential (MWe)
Maize	Stalks	5.1	11.8	23.6	9.4	1.2
Maize	Cobs	5.1	11.8	5.9	3.0	0.41
Paddy	Straw	0.74	1.1	1.6	1.3	0.14
Others	Others	0	0	0.21	0.17	0.019
Total		5.8	12.9	31.3	13.8	1.8

Taluk level Residue-wise Data for Bhattiyat ; Season : Kharif						
Crop	Residue	Area (kHa)	Crop Production (kT/Yr)	Biomass Generation (kT/Yr)	Biomass Surplus (kT/Yr)	Power Potential (MWe)
Maize	Stalks	1.5	3.6	7.2	2.9	0.37
Maize	Cobs	1.5	3.6	1.8	0.90	0.13
Potato	Leaves	0.61	5.5	4.2	0.42	0.058
Others	Others	0	0	0.27	0.055	0.0071
Total		2.2	9.1	13.4	4.2	0.56

Taluk level Residue-wise Data for Chamba ; Season : Kharif						
Crop	Residue	Area (kHa)	Crop Production (kT/Yr)	Biomass Generation (kT/Yr)	Biomass Surplus (kT/Yr)	Power Potential (MWe)
Maize	Stalks	16.2	37.7	75.3	30.1	3.9
Maize	Cobs	16.2	37.7	18.8	9.4	1.3
Total		16.2	37.7	94.2	39.6	5.2

Taluk level Residue-wise Data for Chaurah ; Season : Kharif						
Crop	Residue	Area (kHa)	Crop Production (kT/Yr)	Biomass Generation (kT/Yr)	Biomass Surplus (kT/Yr)	Power Potential (MWe)
Maize	Stalks	2.0	4.6	9.2	3.7	0.48
Paddy	Straw	2.1	3.0	4.5	3.6	0.40
Maize	Cobs	2.0	4.6	2.3	1.2	0.16
Paddy	Husk	2.1	3.0	0.61	0.48	0.053
Total		4.1	7.6	16.7	9.0	1.1

Taluk level Residue-wise Data for Pangri ; Season : Kharif						
Crop	Residue	Area (kHa)	Crop Production (kT/Yr)	Biomass Generation (kT/Yr)	Biomass Surplus (kT/Yr)	Power Potential (MWe)
Maize	Stalks	0.31	0.73	1.5	0.58	0.076
Others	Others	0	0	0.36	0.18	0.025
Total		0.31	0.73	1.8	0.76	0.10

Taluk level Residue-wise Data for Saluni ; Season : Kharif						
Crop	Residue	Area (kHa)	Crop Production (kT/Yr)	Biomass Generation (kT/Yr)	Biomass Surplus (kT/Yr)	Power Potential (MWe)
Maize	Stalks	0.28	0.64	1.3	0.51	0.067
Others	Others	0	0	0.32	0.16	0.022
Total		0.28	0.64	1.6	0.67	0.089

Taluk level Residue-wise Data for Barsar ; Season : Kharif						
Crop	Residue	Area (kHa)	Crop Production (kT/Yr)	Biomass Generation (kT/Yr)	Biomass Surplus (kT/Yr)	Power Potential (MWe)
Maize	Stalks	6.1	11.4	22.7	9.1	1.2
Maize	Cobs	6.1	11.4	5.7	2.8	0.40
Paddy	Straw	0.60	0.96	1.4	1.2	0.13
Others	Others	0	0	0.19	0.15	0.017
Total		6.7	12.3	30.0	13.2	1.7

Taluk level Residue-wise Data for Bhoranj ; Season : Kharif						
Crop	Residue	Area (kHa)	Crop Production (kT/Yr)	Biomass Generation (kT/Yr)	Biomass Surplus (kT/Yr)	Power Potential (MWe)
Paddy	Straw	1.6	2.6	3.9	3.1	0.34
Others	Others	7.00E-06	1.30E-05	0.52	0.42	0.046
Total		1.6	2.6	4.4	3.5	0.39

Taluk level Residue-wise Data for Hamirpur ; Season : Kharif						
Crop	Residue	Area (kHa)	Crop Production (kT/Yr)	Biomass Generation (kT/Yr)	Biomass Surplus (kT/Yr)	Power Potential (MWe)
Maize	Stalks	15.5	28.7	57.5	23.0	3.0
Maize	Cobs	15.5	28.7	14.4	7.2	1.0
Paddy	Straw	0.29	0.46	0.69	0.55	0.061
Others	Others	0	0	0.092	0.074	0.0081
Total		15.7	29.2	72.6	30.8	4.1

Taluk level Residue-wise Data for Nadaun ; Season : Kharif						
Crop	Residue	Area (kHa)	Crop Production (kT/Yr)	Biomass Generation (kT/Yr)	Biomass Surplus (kT/Yr)	Power Potential (MWe)
Maize	Stalks	10.6	19.7	39.3	15.7	2.0
Maize	Cobs	10.6	19.7	9.8	4.9	0.69
Total		10.6	19.7	49.2	20.7	2.7

Taluk level Residue-wise Data for Baijnath ; Season : Kharif						
Crop	Residue	Area (kHa)	Crop Production (kT/Yr)	Biomass Generation (kT/Yr)	Biomass Surplus (kT/Yr)	Power Potential (MWe)
Maize	Stalks	1.1	2.0	3.9	1.6	0.20
Paddy	Straw	0.70	1.0	1.5	1.2	0.13
Maize	Cobs	1.1	2.0	0.98	0.49	0.069
Others	Others	0	0	0.20	0.16	0.018
Total		1.8	3.0	6.6	3.4	0.42

Taluk level Residue-wise Data for Baroh ; Season : Kharif						
Crop	Residue	Area (kHa)	Crop Production (kT/Yr)	Biomass Generation (kT/Yr)	Biomass Surplus (kT/Yr)	Power Potential (MWe)
Paddy	Straw	4.2	6.1	9.2	7.3	0.81
Paddy	Husk	4.2	6.1	1.2	0.98	0.11
Others	Others	0.27	0.47	1.2	0.49	0.065
Total		4.5	6.6	11.5	8.8	0.98

Taluk level Residue-wise Data for Dera Gopipur ; Season : Kharif						
Crop	Residue	Area (kHa)	Crop Production (kT/Yr)	Biomass Generation (kT/Yr)	Biomass Surplus (kT/Yr)	Power Potential (MWe)
Paddy	Straw	11.6	16.8	25.2	20.2	2.2
Maize	Stalks	6.8	11.7	23.3	9.3	1.2
Maize	Cobs	6.8	11.7	5.8	2.9	0.41
Paddy	Husk	11.6	16.8	3.4	2.7	0.30
Total		18.4	28.5	57.8	35.1	4.1

Taluk level Residue-wise Data for Dharmshala ; Season : Kharif						
Crop	Residue	Area (kHa)	Crop Production (kT/Yr)	Biomass Generation (kT/Yr)	Biomass Surplus (kT/Yr)	Power Potential (MWe)
Maize	Stalks	5.1	8.8	17.5	7.0	0.91
Maize	Cobs	5.1	8.8	4.4	2.2	0.31
Paddy	Straw	0.35	0.50	0.76	0.61	0.067
Others	Others	0	0	0.10	0.081	0.0089
Total		5.5	9.3	22.8	9.9	1.3

Taluk level Residue-wise Data for Indora ; Season : Kharif						
Crop	Residue	Area (kHa)	Crop Production (kT/Yr)	Biomass Generation (kT/Yr)	Biomass Surplus (kT/Yr)	Power Potential (MWe)
Paddy	Straw	5.3	7.7	11.6	9.3	1.0
Maize	Stalks	2.8	4.9	9.7	3.9	0.51
Maize	Cobs	2.8	4.9	2.4	1.2	0.17
Paddy	Husk	5.3	7.7	1.5	1.2	0.14
Total		8.2	12.6	25.3	15.6	1.8

Taluk level Residue-wise Data for Jaisinghpur ; Season : Kharif						
Crop	Residue	Area (kHa)	Crop Production (kT/Yr)	Biomass Generation (kT/Yr)	Biomass Surplus (kT/Yr)	Power Potential (MWe)
Maize	Stalks	3.0	5.2	10.4	4.1	0.54
Paddy	Straw	1.3	1.9	2.8	2.3	0.25
Maize	Cobs	3.0	5.2	2.6	1.3	0.18
Others	Others	0	0	0.38	0.30	0.033
Total		4.3	7.1	16.2	8.0	1.0

Taluk level Residue-wise Data for Jaswan ; Season : Kharif						
Crop	Residue	Area (kHa)	Crop Production (kT/Yr)	Biomass Generation (kT/Yr)	Biomass Surplus (kT/Yr)	Power Potential (MWe)
Maize	Stalks	2.0	3.4	6.8	2.7	0.36
Maize	Cobs	2.0	3.4	1.7	0.85	0.12
Paddy	Straw	0.34	0.50	0.75	0.60	0.066
Others	Others	0	0	0.100	0.080	0.0088
Total		2.3	3.9	9.4	4.3	0.55

Taluk level Residue-wise Data for Jawali ; Season : Kharif						
Crop	Residue	Area (kHa)	Crop Production (kT/Yr)	Biomass Generation (kT/Yr)	Biomass Surplus (kT/Yr)	Power Potential (MWe)
Maize	Stalks	11.8	20.2	40.4	16.2	2.1
Maize	Cobs	11.8	20.2	10.1	5.0	0.71
Paddy	Straw	1.8	2.6	3.9	3.1	0.34
Others	Others	0	0	0.52	0.42	0.046
Total		13.6	22.8	54.9	24.7	3.2

Taluk level Residue-wise Data for Kangra ; Season : Kharif						
Crop	Residue	Area (kHa)	Crop Production (kT/Yr)	Biomass Generation (kT/Yr)	Biomass Surplus (kT/Yr)	Power Potential (MWe)
Maize	Stalks	12.2	20.8	41.5	16.6	2.2
Paddy	Straw	4.2	6.0	9.0	7.2	0.79
Maize	Cobs	12.2	20.8	10.4	5.2	0.73
Paddy	Husk	4.2	6.0	1.2	0.96	0.11
Others	Others	0.10	0.20	0.40	0.040	0.0052
Total		16.4	27.0	62.6	30.0	3.8

Taluk level Residue-wise Data for Nurpur ; Season : Kharif						
Crop	Residue	Area (kHa)	Crop Production (kT/Yr)	Biomass Generation (kT/Yr)	Biomass Surplus (kT/Yr)	Power Potential (MWe)
Maize	Stalks	9.8	16.8	33.5	13.4	1.7
Paddy	Straw	5.0	7.2	10.8	8.6	0.95
Maize	Cobs	9.8	16.8	8.4	4.2	0.59
Paddy	Husk	5.0	7.2	1.4	1.2	0.13
Total		14.8	24.0	54.1	27.4	3.4

Taluk level Residue-wise Data for Palampur ; Season : Kharif						
Crop	Residue	Area (kHa)	Crop Production (kT/Yr)	Biomass Generation (kT/Yr)	Biomass Surplus (kT/Yr)	Power Potential (MWe)
Maize	Stalks	4.7	7.9	15.9	6.4	0.83
Paddy	Straw	2.0	3.0	4.4	3.6	0.39
Maize	Cobs	4.7	7.9	4.0	2.0	0.28
Paddy	Husk	2.0	3.0	0.59	0.47	0.052
Total		6.7	10.9	24.9	12.4	1.5

Taluk level Residue-wise Data for Nichar ; Season : Kharif						
Crop	Residue	Area (kHa)	Crop Production (kT/Yr)	Biomass Generation (kT/Yr)	Biomass Surplus (kT/Yr)	Power Potential (MWe)
Maize	Stalks	0.41	0.91	1.8	0.73	0.095
Others	Others	0	0	0.46	0.23	0.032
Total		0.41	0.91	2.3	0.96	0.13

Taluk level Residue-wise Data for Ani ; Season : Kharif						
Crop	Residue	Area (kHa)	Crop Production (kT/Yr)	Biomass Generation (kT/Yr)	Biomass Surplus (kT/Yr)	Power Potential (MWe)
Paddy	Straw	0.40	0.52	0.77	0.62	0.068
Maize	Stalks	0.19	0.56	1.1	0.45	0.058
Others	Others	0	0	0.38	0.22	0.029
Total		0.59	1.1	2.3	1.3	0.16

Taluk level Residue-wise Data for Banjar ; Season : Kharif						
Crop	Residue	Area (kHa)	Crop Production (kT/Yr)	Biomass Generation (kT/Yr)	Biomass Surplus (kT/Yr)	Power Potential (MWe)
Maize	Stalks	9.6	27.6	55.3	22.1	2.9
Maize	Cobs	9.6	27.6	13.8	6.9	0.97
Paddy	Straw	0.73	0.95	1.4	1.1	0.12
Others	Others	0	0	0.19	0.15	0.017
Total		10.3	28.6	70.7	30.3	4.0

Taluk level Residue-wise Data for Kullu ; Season : Kharif						
Crop	Residue	Area (kHa)	Crop Production (kT/Yr)	Biomass Generation (kT/Yr)	Biomass Surplus (kT/Yr)	Power Potential (MWe)
Maize	Stalks	3.9	11.3	22.5	9.0	1.2
Maize	Cobs	3.9	11.3	5.6	2.8	0.39
Paddy	Straw	0.60	0.78	1.2	0.93	0.10
Others	Others	0	0	0.16	0.12	0.014
Total		4.5	12.0	29.5	12.9	1.7

Taluk level Residue-wise Data for Nermand ; Season : Kharif						
Crop	Residue	Area (kHa)	Crop Production (kT/Yr)	Biomass Generation (kT/Yr)	Biomass Surplus (kT/Yr)	Power Potential (MWe)
Maize	Stalks	1.3	3.8	7.7	3.1	0.40
Maize	Cobs	1.3	3.8	1.9	0.96	0.13
Total		1.3	3.8	9.6	4.0	0.53

Taluk level Residue-wise Data for Lahul ; Season : Kharif						
Crop	Residue	Area (kHa)	Crop Production (kT/Yr)	Biomass Generation (kT/Yr)	Biomass Surplus (kT/Yr)	Power Potential (MWe)
Others	Others	0.11	0.18	0.30	0.030	0.0039
Total		0.11	0.18	0.30	0.030	0.0039

Taluk level Residue-wise Data for Chachyot ; Season : Kharif						
Crop	Residue	Area (kHa)	Crop Production (kT/Yr)	Biomass Generation (kT/Yr)	Biomass Surplus (kT/Yr)	Power Potential (MWe)
Maize	Stalks	3.8	11.2	22.4	9.0	1.2
Maize	Cobs	3.8	11.2	5.6	2.8	0.39
Others	Others	0.32	0.55	1.1	0.11	0.014
Total		4.2	11.8	29.2	11.9	1.6

Taluk level Residue-wise Data for Jogindarnagar ; Season : Kharif						
Crop	Residue	Area (kHa)	Crop Production (kT/Yr)	Biomass Generation (kT/Yr)	Biomass Surplus (kT/Yr)	Power Potential (MWe)
Paddy	Straw	18.4	27.6	41.3	33.1	3.6
Maize	Stalks	4.8	14.0	28.0	11.2	1.5
Maize	Cobs	4.8	14.0	7.0	3.5	0.49
Paddy	Husk	18.4	27.6	5.5	4.4	0.49
Total		23.2	41.6	81.8	52.2	6.1

Taluk level Residue-wise Data for Karsog ; Season : Kharif						
Crop	Residue	Area (kHa)	Crop Production (kT/Yr)	Biomass Generation (kT/Yr)	Biomass Surplus (kT/Yr)	Power Potential (MWe)
Maize	Stalks	2.9	8.4	16.7	6.7	0.87
Maize	Cobs	2.9	8.4	4.2	2.1	0.29
Total		2.9	8.4	20.9	8.8	1.2

Taluk level Residue-wise Data for Mandi ; Season : Kharif						
Crop	Residue	Area (kHa)	Crop Production (kT/Yr)	Biomass Generation (kT/Yr)	Biomass Surplus (kT/Yr)	Power Potential (MWe)
Maize	Stalks	12.5	36.5	73.0	29.2	3.8
Maize	Cobs	12.5	36.5	18.3	9.1	1.3
Others	Others	0.093	0.16	0.32	0.032	0.0042
Total		12.6	36.7	91.6	38.4	5.1

Taluk level Residue-wise Data for Sarkaghat ; Season : Kharif						
Crop	Residue	Area (kHa)	Crop Production (kT/Yr)	Biomass Generation (kT/Yr)	Biomass Surplus (kT/Yr)	Power Potential (MWe)
Maize	Stalks	17.2	50.2	100.4	40.2	5.2
Maize	Cobs	17.2	50.2	25.1	12.6	1.8
Total		17.2	50.2	125.5	52.7	7.0

Taluk level Residue-wise Data for Sundar Nagar ; Season : Kharif

Crop	Residue	Area (kHa)	Crop Production (kT/Yr)	Biomass Generation (kT/Yr)	Biomass Surplus (kT/Yr)	Power Potential (MWe)
Maize	Stalks	0.91	2.7	5.3	2.1	0.28
Maize	Cobs	0.91	2.7	1.3	0.66	0.093
Paddy	Straw	0.45	0.68	1.0	0.82	0.090
Others	Others	0	0	0.14	0.11	0.012
Total		1.4	3.3	7.8	3.7	0.47

Taluk level Residue-wise Data for Thunag ; Season : Kharif

Crop	Residue	Area (kHa)	Crop Production (kT/Yr)	Biomass Generation (kT/Yr)	Biomass Surplus (kT/Yr)	Power Potential (MWe)
Maize	Stalks	5.0	14.6	29.2	11.7	1.5
Maize	Cobs	5.0	14.6	7.3	3.7	0.51
Paddy	Straw	2.0	2.9	4.4	3.5	0.39
Paddy	Husk	2.0	2.9	0.59	0.47	0.052
Total		7.0	17.6	41.6	19.4	2.5

Taluk level Residue-wise Data for Chaupal ; Season : Kharif

Crop	Residue	Area (kHa)	Crop Production (kT/Yr)	Biomass Generation (kT/Yr)	Biomass Surplus (kT/Yr)	Power Potential (MWe)
Maize	Stalks	1.1	2.5	5.1	2.0	0.26
Maize	Cobs	1.1	2.5	1.3	0.64	0.089
Total		1.1	2.5	6.4	2.7	0.35

Taluk level Residue-wise Data for Chirgaon ; Season : Kharif

Crop	Residue	Area (kHa)	Crop Production (kT/Yr)	Biomass Generation (kT/Yr)	Biomass Surplus (kT/Yr)	Power Potential (MWe)
Maize	Stalks	0.88	2.0	4.0	1.6	0.21
Maize	Cobs	0.88	2.0	1.0	0.50	0.071
Total		0.88	2.0	5.0	2.1	0.28

Taluk level Residue-wise Data for Jubbal ; Season : Kharif						
Crop	Residue	Area (kHa)	Crop Production (kT/Yr)	Biomass Generation (kT/Yr)	Biomass Surplus (kT/Yr)	Power Potential (MWe)
Others	Others	0.18	0.40	1.0	0.42	0.056
Total		0.18	0.40	1.0	0.42	0.056

Taluk level Residue-wise Data for Kotkhai ; Season : Kharif						
Crop	Residue	Area (kHa)	Crop Production (kT/Yr)	Biomass Generation (kT/Yr)	Biomass Surplus (kT/Yr)	Power Potential (MWe)
Maize	Stalks	0.24	0.54	1.1	0.43	0.056
Others	Others	0.081	0.092	0.43	0.26	0.033
Total		0.32	0.63	1.5	0.69	0.089

Taluk level Residue-wise Data for Kumharsain ; Season : Kharif						
Crop	Residue	Area (kHa)	Crop Production (kT/Yr)	Biomass Generation (kT/Yr)	Biomass Surplus (kT/Yr)	Power Potential (MWe)
Maize	Stalks	2.3	5.3	10.6	4.2	0.55
Maize	Cobs	2.3	5.3	2.6	1.3	0.19
Total		2.3	5.3	13.2	5.6	0.74

Taluk level Residue-wise Data for Rampur ; Season : Kharif						
Crop	Residue	Area (kHa)	Crop Production (kT/Yr)	Biomass Generation (kT/Yr)	Biomass Surplus (kT/Yr)	Power Potential (MWe)
Maize	Stalks	3.1	7.1	14.3	5.7	0.74
Maize	Cobs	3.1	7.1	3.6	1.8	0.25
Total		3.1	7.1	17.8	7.5	0.99

Taluk level Residue-wise Data for Rohru ; Season : Kharif						
Crop	Residue	Area (kHa)	Crop Production (kT/Yr)	Biomass Generation (kT/Yr)	Biomass Surplus (kT/Yr)	Power Potential (MWe)
Maize	Stalks	5.1	11.6	23.3	9.3	1.2
Paddy	Straw	2.9	3.3	4.9	3.9	0.43
Maize	Cobs	5.1	11.6	5.8	2.9	0.41
Paddy	Husk	2.9	3.3	0.65	0.52	0.058
Total		7.9	14.9	34.7	16.7	2.1

Taluk level Residue-wise Data for Shimla Rural ; Season : Kharif						
Crop	Residue	Area (kHa)	Crop Production (kT/Yr)	Biomass Generation (kT/Yr)	Biomass Surplus (kT/Yr)	Power Potential (MWe)
Others	Others	0.065	0.12	0.29	0.12	0.016
Total		0.065	0.12	0.29	0.12	0.016

Taluk level Residue-wise Data for Shimla Urban ; Season : Kharif						
Crop	Residue	Area (kHa)	Crop Production (kT/Yr)	Biomass Generation (kT/Yr)	Biomass Surplus (kT/Yr)	Power Potential (MWe)
Maize	Stalks	0.38	0.88	1.8	0.70	0.092
Others	Others	0	0	0.44	0.22	0.031
Total		0.38	0.88	2.2	0.92	0.12

Taluk level Residue-wise Data for Suni ; Season : Kharif						
Crop	Residue	Area (kHa)	Crop Production (kT/Yr)	Biomass Generation (kT/Yr)	Biomass Surplus (kT/Yr)	Power Potential (MWe)
Maize	Stalks	2.4	5.5	11.0	4.4	0.57
Maize	Cobs	2.4	5.5	2.7	1.4	0.19
Total		2.4	5.5	13.7	5.8	0.76

Taluk level Residue-wise Data for Theog ; Season : Kharif						
Crop	Residue	Area (kHa)	Crop Production (kT/Yr)	Biomass Generation (kT/Yr)	Biomass Surplus (kT/Yr)	Power Potential (MWe)
Maize	Stalks	1.3	3.0	6.0	2.4	0.31
Maize	Cobs	1.3	3.0	1.5	0.74	0.10
Others	Others	0.18	0.092	0.14	0.014	0.0018
Total		1.5	3.1	7.6	3.1	0.42

Taluk level Residue-wise Data for Nahana ; Season : Kharif						
Crop	Residue	Area (kHa)	Crop Production (kT/Yr)	Biomass Generation (kT/Yr)	Biomass Surplus (kT/Yr)	Power Potential (MWe)
Maize	Stalks	0.54	1.7	3.4	1.4	0.18
Maize	Cobs	0.54	1.7	0.85	0.42	0.059
Others	Others	0.30	0.10	0.15	0.015	0.0020
Total		0.84	1.8	4.4	1.8	0.24

Taluk level Residue-wise Data for Pachhad ; Season : Kharif						
Crop	Residue	Area (kHa)	Crop Production (kT/Yr)	Biomass Generation (kT/Yr)	Biomass Surplus (kT/Yr)	Power Potential (MWe)
Maize	Stalks	2.6	8.3	16.7	6.7	0.87
Maize	Cobs	2.6	8.3	4.2	2.1	0.29
Others	Others	0.097	0.097	0.19	0.019	0.0025
Total		2.7	8.4	21.0	8.8	1.2

Taluk level Residue-wise Data for Paonta ; Season : Kharif						
Crop	Residue	Area (kHa)	Crop Production (kT/Yr)	Biomass Generation (kT/Yr)	Biomass Surplus (kT/Yr)	Power Potential (MWe)
Maize	Stalks	11.8	37.3	74.6	29.9	3.9
Maize	Cobs	11.8	37.3	18.7	9.3	1.3
Paddy	Straw	0.60	0.91	1.4	1.1	0.12
Others	Others	0.0020	0.0020	0.19	0.15	0.016
Total		12.4	38.2	94.8	40.4	5.3

Taluk level Residue-wise Data for Rajgarh ; Season : Kharif						
Crop	Residue	Area (kHa)	Crop Production (kT/Yr)	Biomass Generation (kT/Yr)	Biomass Surplus (kT/Yr)	Power Potential (MWe)
Maize	Stalks	0.37	1.2	2.4	0.94	0.12
Others	Others	0.00045	0.00045	0.59	0.30	0.041
Total		0.37	1.2	3.0	1.2	0.16

Taluk level Residue-wise Data for Renuka ; Season : Kharif						
Crop	Residue	Area (kHa)	Crop Production (kT/Yr)	Biomass Generation (kT/Yr)	Biomass Surplus (kT/Yr)	Power Potential (MWe)
Maize	Stalks	4.2	13.4	26.8	10.7	1.4
Maize	Cobs	4.2	13.4	6.7	3.4	0.47
Paddy	Straw	1.9	2.9	4.4	3.5	0.39
Paddy	Husk	1.9	2.9	0.59	0.47	0.052
Others	Others	0.0016	0.0016	0.0033	0.00033	4.24E-05
Total		6.2	16.3	38.5	18.1	2.3

Taluk level Residue-wise Data for Shilla ; Season : Kharif						
Crop	Residue	Area (kHa)	Crop Production (kT/Yr)	Biomass Generation (kT/Yr)	Biomass Surplus (kT/Yr)	Power Potential (MWe)
Maize	Stalks	5.3	16.7	33.4	13.3	1.7
Paddy	Straw	2.9	4.5	6.7	5.4	0.59
Maize	Cobs	5.3	16.7	8.3	4.2	0.58
Paddy	Husk	2.9	4.5	0.89	0.71	0.079
Total		8.2	21.1	49.3	23.6	3.0

Taluk level Residue-wise Data for Arki ; Season : Kharif						
Crop	Residue	Area (kHa)	Crop Production (kT/Yr)	Biomass Generation (kT/Yr)	Biomass Surplus (kT/Yr)	Power Potential (MWe)
Maize	Stalks	0.70	1.5	3.0	1.2	0.16
Maize	Cobs	0.70	1.5	0.75	0.38	0.053
Others	Others	0.095	0.17	0.29	0.23	0.025
Total		0.79	1.7	4.1	1.8	0.23

Taluk level Residue-wise Data for Kandaghat ; Season : Kharif						
Crop	Residue	Area (kHa)	Crop Production (kT/Yr)	Biomass Generation (kT/Yr)	Biomass Surplus (kT/Yr)	Power Potential (MWe)
Maize	Stalks	1.4	3.0	5.9	2.4	0.31
Maize	Cobs	1.4	3.0	1.5	0.74	0.10
Total		1.4	3.0	7.4	3.1	0.41

Taluk level Residue-wise Data for Kasauli ; Season : Kharif						
Crop	Residue	Area (kHa)	Crop Production (kT/Yr)	Biomass Generation (kT/Yr)	Biomass Surplus (kT/Yr)	Power Potential (MWe)
Maize	Stalks	6.3	13.5	27.0	10.8	1.4
Maize	Cobs	6.3	13.5	6.8	3.4	0.47
Others	Others	0.055	0.10	0.17	0.14	0.015
Total		6.3	13.6	34.0	14.3	1.9

Taluk level Residue-wise Data for Nalagarh ; Season : Kharif						
Crop	Residue	Area (kHa)	Crop Production (kT/Yr)	Biomass Generation (kT/Yr)	Biomass Surplus (kT/Yr)	Power Potential (MWe)
Maize	Stalks	13.9	30.0	59.9	24.0	3.1
Maize	Cobs	13.9	30.0	15.0	7.5	1.0
Paddy	Straw	3.4	6.2	9.3	7.5	0.82
Paddy	Husk	3.4	6.2	1.2	0.99	0.11
Others	Others	0.099	0.099	0.23	0.040	0.0051
Total		17.4	36.3	85.7	40.0	5.1

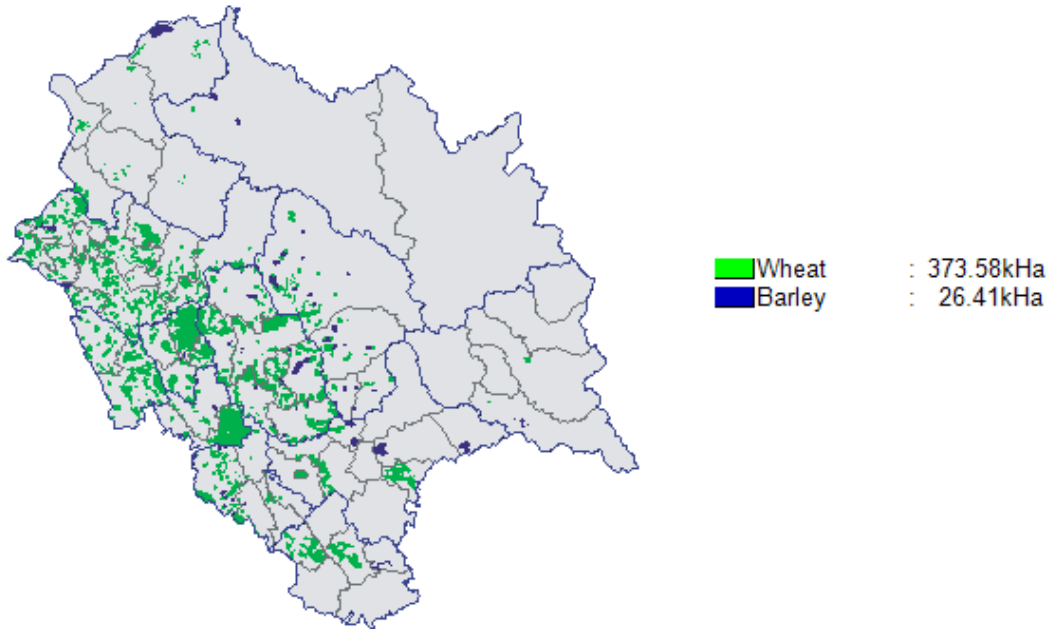
Taluk level Residue-wise Data for Solan ; Season : Kharif						
Crop	Residue	Area (kHa)	Crop Production (kT/Yr)	Biomass Generation (kT/Yr)	Biomass Surplus (kT/Yr)	Power Potential (MWe)
Maize	Stalks	2.1	4.5	8.9	3.6	0.46
Maize	Cobs	2.1	4.5	2.2	1.1	0.16
Total		2.1	4.5	11.2	4.7	0.62

Taluk level Residue-wise Data for Amb ; Season : Kharif						
Crop	Residue	Area (kHa)	Crop Production (kT/Yr)	Biomass Generation (kT/Yr)	Biomass Surplus (kT/Yr)	Power Potential (MWe)
Maize	Stalks	8.1	16.9	33.9	13.6	1.8
Maize	Cobs	8.1	16.9	8.5	4.2	0.59
Paddy	Straw	1.1	2.4	3.6	2.9	0.32
Others	Others	0	0	0.48	0.38	0.042
Total		9.2	19.3	46.4	21.0	2.7

Taluk level Residue-wise Data for Una ; Season : Kharif						
Crop	Residue	Area (kHa)	Crop Production (kT/Yr)	Biomass Generation (kT/Yr)	Biomass Surplus (kT/Yr)	Power Potential (MWe)
Maize	Stalks	21.5	45.0	90.0	36.0	4.7
Maize	Cobs	21.5	45.0	22.5	11.3	1.6
Paddy	Straw	1.6	3.6	5.4	4.3	0.47
Paddy	Husk	1.6	3.6	0.72	0.58	0.063
Total		23.1	48.6	118.7	52.2	6.8

Rabi

Himachal Pradesh-Rabi



State Level Residue Wise

State level Residue-wise Data for Himachal Pradesh; Season : Rabi						
Crop	Residue	Area (kHa)	Crop Production (kT/Yr)	Biomass Generation (kT/Yr)	Biomass Surplus (kT/Yr)	Power Potential (MWe)
Wheat	Stalks	373.6	587.2	880.7	176.1	22.9
Wheat	Pod	373.6	587.2	176.1	35.2	4.9
Barley	Stalks	26.4	32.9	42.8	4.3	0.56
Total		400.0	620.1	1099.7	215.7	28.4

State Level District Wise

State level District-wise Data for Himachal Pradesh ; Season : Rabi					
District	Area (kHa)	Crop Production (kT/Yr)	Biomass Generation (kT/Yr)	Biomass Surplus (kT/Yr)	Power Potential (MWe)
Kangra	98.5	149.5	267.1	52.9	7.0
Mandi	72.9	116.4	206.4	40.5	5.3
Una	32.2	63.8	114.8	23.0	3.0
Bilaspur	27.3	47.3	85.0	16.9	2.2
Sirmaur	30.4	48.7	86.1	16.8	2.2
Hamirpur	35.8	43.3	77.9	15.5	2.0
Solan	25.8	42.2	75.1	14.8	1.9
Kullu	24.9	40.9	70.9	13.5	1.8
Chamba	24.9	37.5	64.9	12.3	1.6
Shimla	24.9	27.4	47.1	8.8	1.2
Kinnaur	1.8	2.5	3.6	0.47	0.061
Lahul & Spiti	0.76	0.61	0.84	0.10	0.013
Total	400.0	620.1	1099.7	215.7	28.4

State Level Taluk Wise

State level Taluk-wise Data for Himachal Pradesh ; Season : Rabi						
District	Taluk	Area (kHa)	Crop Production (kT/Yr)	Biomass Generation (kT/Yr)	Biomass Surplus (kT/Yr)	Power Potential (MWe)
Una	Una	27.7	54.9	98.9	19.8	2.6
Kangra	Dera Gopipur	31.9	48.7	87.6	17.5	2.3
Bilaspur	Bilaspur	25.5	44.2	79.6	15.9	2.1
Solan	Nalagarh	22.0	36.2	64.6	12.8	1.7
Kullu	Kullu	19.5	32.2	56.7	11.0	1.5
Sirmaur	Pachhad	17.4	28.8	51.8	10.4	1.4
Hamirpur	Hamirpur	20.8	25.2	45.3	9.0	1.2
Mandi	Sarkaghat	15.7	25.2	45.3	9.0	1.2
Kangra	Kangra	16.1	24.6	44.2	8.8	1.2
Mandi	Mandi	12.8	20.5	36.8	7.4	0.97
Sirmaur	Renuka	10.3	16.9	30.5	6.1	0.80
Mandi	Sundar Nagar	10.9	17.4	30.9	6.1	0.80
Mandi	Chachyot	9.6	15.5	27.9	5.6	0.73
Kangra	Nurpur	11.4	16.7	28.5	5.3	0.70

District	Taluk	Area (kHa)	Crop Production (kT/Yr)	Biomass Generation (kT/Yr)	Biomass Surplus (kT/Yr)	Power Potential (MWe)
Mandi	Karsog	9.7	15.4	26.9	5.2	0.68
Kangra	Indora	8.6	13.1	23.6	4.7	0.62
Mandi	Thunag	8.8	13.7	23.3	4.3	0.56
Kangra	Palampur	7.6	11.7	21.0	4.2	0.55
Chamba	Chamba	7.9	12.0	21.3	4.2	0.55
Hamirpur	Bhoranj	9.5	11.5	20.7	4.1	0.55
Shimla	Jubbal	10.0	11.3	20.4	4.1	0.54
Una	Amb	4.5	8.8	15.9	3.2	0.42
Chamba	Pangi	7.9	11.5	18.3	3.1	0.40
Mandi	Jogindarnagar	5.4	8.6	15.2	2.9	0.39
Chamba	Saluni	5.2	7.9	14.3	2.9	0.38
Kangra	Jawali	5.1	7.7	13.9	2.8	0.37
Kangra	Jaisinghpur	4.9	7.5	13.5	2.7	0.36
Shimla	Theog	6.5	7.4	13.3	2.7	0.35
Kangra	Jaswan	4.9	7.3	12.8	2.5	0.33
Kangra	Dharmshala	4.5	6.9	12.4	2.5	0.33
Kangra	Baijnath	3.3	5.1	9.1	1.8	0.24
Kullu	Banjar	3.9	6.2	10.2	1.8	0.23
Solan	Kasauli	2.8	4.4	7.6	1.4	0.19
Hamirpur	Barsar	3.2	3.8	6.9	1.4	0.18
Bilaspur	Ghumarwin	1.8	3.1	5.4	1.0	0.13
Hamirpur	Nadaun	2.3	2.7	4.9	0.99	0.13
Chamba	Chaurah	1.8	2.7	4.9	0.97	0.13
Chamba	Bhattiyat	1.6	2.4	4.4	0.88	0.12
Shimla	Suni	1.4	1.6	2.9	0.59	0.077
Shimla	Kumharsain	2.6	2.7	4.0	0.58	0.076
Shimla	Shimla Urban	1.3	1.5	2.7	0.55	0.072
Kullu	Nermand	0.75	1.2	2.1	0.38	0.050
Sirmaur	Shilla	2.5	2.8	3.6	0.36	0.047
Chamba	Bhamaur	0.62	0.95	1.7	0.34	0.045
Solan	Solan	0.56	0.94	1.7	0.34	0.045
Kullu	Ani	0.81	1.3	1.9	0.28	0.037
Kinnaur	Sangla	1.4	2.0	2.6	0.27	0.035
Shimla	Rohru	2.0	1.9	2.5	0.25	0.033
Kinnaur	Morang	0.36	0.54	0.98	0.20	0.026
Solan	Arki	0.22	0.38	0.68	0.14	0.018
Shimla	Chirgaon	0.98	0.94	1.2	0.12	0.016

District	Taluk	Area (kHa)	Crop Production (kT/Yr)	Biomass Generation (kT/Yr)	Biomass Surplus (kT/Yr)	Power Potential (MWe)
Solan	Kandaghat	0.19	0.31	0.57	0.11	0.015
Lahul & Spiti	Lahul	0.75	0.61	0.84	0.10	0.013
Kangra	Baroh	0.10	0.16	0.28	0.056	0.0074
Sirmaur	Paonta	0.13	0.14	0.18	0.018	0.0024
Lahul & Spiti	Spiti	0.0011	0.00093	0.0012	0.00012	1.57E-05
Total		400.0	620.1	1099.7	215.7	28.4

District Level Residue Wise

District level Residue-wise Data for Bilaspur; Season : Rabi						
Crop	Residue	Area (kHa)	Crop Production (kT/Yr)	Biomass Generation (kT/Yr)	Biomass Surplus (kT/Yr)	Power Potential (MWe)
Wheat	Stalks	27.0	46.9	70.4	14.1	1.8
Wheat	Pod	27.0	46.9	14.1	2.8	0.39
Others	Others	0.30	0.41	0.53	0.053	0.0069
Total		27.3	47.3	85.0	16.9	2.2

District level Residue-wise Data for Chamba; Season : Rabi						
Crop	Residue	Area (kHa)	Crop Production (kT/Yr)	Biomass Generation (kT/Yr)	Biomass Surplus (kT/Yr)	Power Potential (MWe)
Wheat	Stalks	21.0	32.3	48.4	9.7	1.3
Wheat	Pod	21.0	32.3	9.7	1.9	0.27
Barley	Stalks	3.9	5.2	6.8	0.68	0.088
Total		24.9	37.5	64.9	12.3	1.6

District level Residue-wise Data for Hamirpur; Season : Rabi						
Crop	Residue	Area (kHa)	Crop Production (kT/Yr)	Biomass Generation (kT/Yr)	Biomass Surplus (kT/Yr)	Power Potential (MWe)
Wheat	Stalks	35.7	43.1	64.7	12.9	1.7
Wheat	Pod	35.7	43.1	12.9	2.6	0.36
Others	Others	0.10	0.20	0.26	0.026	0.0034
Total		35.8	43.3	77.9	15.5	2.0

District level Residue-wise Data for Kangra; Season : Rabi						
Crop	Residue	Area (kHa)	Crop Production (kT/Yr)	Biomass Generation (kT/Yr)	Biomass Surplus (kT/Yr)	Power Potential (MWe)
Wheat	Stalks	95.4	145.7	218.5	43.7	5.7
Wheat	Pod	95.4	145.7	43.7	8.7	1.2
Barley	Stalks	3.1	3.8	4.9	0.49	0.064
Total		98.5	149.5	267.1	52.9	7.0

District level Residue-wise Data for Kinnaur; Season : Rabi						
Crop	Residue	Area (kHa)	Crop Production (kT/Yr)	Biomass Generation (kT/Yr)	Biomass Surplus (kT/Yr)	Power Potential (MWe)
Others	Others	1.8	2.5	3.6	0.47	0.061
Total		1.8	2.5	3.6	0.47	0.061

District level Residue-wise Data for Kullu; Season : Rabi						
Crop	Residue	Area (kHa)	Crop Production (kT/Yr)	Biomass Generation (kT/Yr)	Biomass Surplus (kT/Yr)	Power Potential (MWe)
Wheat	Stalks	21.2	35.4	53.1	10.6	1.4
Wheat	Pod	21.2	35.4	10.6	2.1	0.30
Barley	Stalks	3.7	5.5	7.1	0.71	0.093
Total		24.9	40.9	70.9	13.5	1.8

District level Residue-wise Data for Lahul & Spiti; Season : Rabi						
Crop	Residue	Area (kHa)	Crop Production (kT/Yr)	Biomass Generation (kT/Yr)	Biomass Surplus (kT/Yr)	Power Potential (MWe)
Others	Others	0.76	0.61	0.84	0.10	0.013
Total		0.76	0.61	0.84	0.10	0.013

District level Residue-wise Data for Mandi; Season : Rabi						
Crop	Residue	Area (kHa)	Crop Production (kT/Yr)	Biomass Generation (kT/Yr)	Biomass Surplus (kT/Yr)	Power Potential (MWe)
Wheat	Stalks	68.6	110.2	165.3	33.1	4.3
Wheat	Pod	68.6	110.2	33.1	6.6	0.93
Barley	Stalks	4.3	6.2	8.0	0.80	0.10
Total		72.9	116.4	206.4	40.5	5.3

District level Residue-wise Data for Shimla; Season : Rabi						
Crop	Residue	Area (kHa)	Crop Production (kT/Yr)	Biomass Generation (kT/Yr)	Biomass Surplus (kT/Yr)	Power Potential (MWe)
Wheat	Stalks	20.2	22.9	34.4	6.9	0.89
Wheat	Pod	20.2	22.9	6.9	1.4	0.19
Barley	Stalks	4.7	4.5	5.8	0.58	0.076
Total		24.9	27.4	47.1	8.8	1.2

District level Residue-wise Data for Sirmaur; Season : Rabi						
Crop	Residue	Area (kHa)	Crop Production (kT/Yr)	Biomass Generation (kT/Yr)	Biomass Surplus (kT/Yr)	Power Potential (MWe)
Wheat	Stalks	27.7	45.7	68.6	13.7	1.8
Wheat	Pod	27.7	45.7	13.7	2.7	0.38
Others	Others	2.6	2.9	3.8	0.38	0.050
Total		30.4	48.7	86.1	16.8	2.2

District level Residue-wise Data for Solan; Season : Rabi						
Crop	Residue	Area (kHa)	Crop Production (kT/Yr)	Biomass Generation (kT/Yr)	Biomass Surplus (kT/Yr)	Power Potential (MWe)
Wheat	Stalks	24.1	40.4	60.6	12.1	1.6
Wheat	Pod	24.1	40.4	12.1	2.4	0.34
Others	Others	1.7	1.8	2.4	0.24	0.031
Total		25.8	42.2	75.1	14.8	1.9

District level Residue-wise Data for Una; Season : Rabi						
Crop	Residue	Area (kHa)	Crop Production (kT/Yr)	Biomass Generation (kT/Yr)	Biomass Surplus (kT/Yr)	Power Potential (MWe)
Wheat	Stalks	32.2	63.8	95.6	19.1	2.5
Wheat	Pod	32.2	63.8	19.1	3.8	0.54
Total		32.2	63.8	114.8	23.0	3.0

District Level Taluk Wise

DistrictLevel Taluk-wise Data for Bilaspur ; Season : Rabi					
Taluk	Area (kHa)	Crop Production (kT/Yr)	Biomass Generation (kT/Yr)	Biomass Surplus (kT/Yr)	Power Potential (MWe)
Bilaspur	25.5	44.2	79.6	15.9	2.1
Ghumarwin	1.8	3.1	5.4	1.0	0.13
Total	27.3	47.3	85.0	16.9	2.2

DistrictLevel Taluk-wise Data for Chamba ; Season : Rabi					
Taluk	Area (kHa)	Crop Production (kT/Yr)	Biomass Generation (kT/Yr)	Biomass Surplus (kT/Yr)	Power Potential (MWe)
Chamba	7.9	12.0	21.3	4.2	0.55
Pangi	7.9	11.5	18.3	3.1	0.40
Saluni	5.2	7.9	14.3	2.9	0.38
Chaurah	1.8	2.7	4.9	0.97	0.13
Bhattiyat	1.6	2.4	4.4	0.88	0.12
Bhamaur	0.62	0.95	1.7	0.34	0.045
Total	24.9	37.5	64.9	12.3	1.6

DistrictLevel Taluk-wise Data for Hamirpur ; Season : Rabi					
Taluk	Area (kHa)	Crop Production (kT/Yr)	Biomass Generation (kT/Yr)	Biomass Surplus (kT/Yr)	Power Potential (MWe)
Hamirpur	20.8	25.2	45.3	9.0	1.2
Bhoranj	9.5	11.5	20.7	4.1	0.55
Barsar	3.2	3.8	6.9	1.4	0.18
Nadaun	2.3	2.7	4.9	0.99	0.13
Total	35.8	43.3	77.9	15.5	2.0

DistrictLevel Taluk-wise Data for Kangra ; Season : Rabi					
Taluk	Area (kHa)	Crop Production (kT/Yr)	Biomass Generation (kT/Yr)	Biomass Surplus (kT/Yr)	Power Potential (MWe)
Dera Gopipur	31.9	48.7	87.6	17.5	2.3
Kangra	16.1	24.6	44.2	8.8	1.2
Nurpur	11.4	16.7	28.5	5.3	0.70
Indora	8.6	13.1	23.6	4.7	0.62
Palampur	7.6	11.7	21.0	4.2	0.55
Jawali	5.1	7.7	13.9	2.8	0.37
Jaisinghpur	4.9	7.5	13.5	2.7	0.36
Jaswan	4.9	7.3	12.8	2.5	0.33
Dharmshala	4.5	6.9	12.4	2.5	0.33
Bajjnath	3.3	5.1	9.1	1.8	0.24
Baroh	0.10	0.16	0.28	0.056	0.0074
Total	98.5	149.5	267.1	52.9	7.0

DistrictLevel Taluk-wise Data for Kinnaur ; Season : Rabi					
Taluk	Area (kHa)	Crop Production (kT/Yr)	Biomass Generation (kT/Yr)	Biomass Surplus (kT/Yr)	Power Potential (MWe)
Sangla	1.4	2.0	2.6	0.27	0.035
Morang	0.36	0.54	0.98	0.20	0.026
Total	1.8	2.5	3.6	0.47	0.061

DistrictLevel Taluk-wise Data for Kullu ; Season : Rabi					
Taluk	Area (kHa)	Crop Production (kT/Yr)	Biomass Generation (kT/Yr)	Biomass Surplus (kT/Yr)	Power Potential (MWe)
Kullu	19.5	32.2	56.7	11.0	1.5
Banjar	3.9	6.2	10.2	1.8	0.23
Nermand	0.75	1.2	2.1	0.38	0.050
Ani	0.81	1.3	1.9	0.28	0.037
Total	24.9	40.9	70.9	13.5	1.8

DistrictLevel Taluk-wise Data for Lahul & Spiti ; Season : Rabi					
Taluk	Area (kHa)	Crop Production (kT/Yr)	Biomass Generation (kT/Yr)	Biomass Surplus (kT/Yr)	Power Potential (MWe)
Lahul	0.75	0.61	0.84	0.10	0.013
Spiti	0.0011	0.00093	0.0012	0.00012	1.57E-05
Total	0.76	0.61	0.84	0.10	0.013

DistrictLevel Taluk-wise Data for Mandi ; Season : Rabi					
Taluk	Area (kHa)	Crop Production (kT/Yr)	Biomass Generation (kT/Yr)	Biomass Surplus (kT/Yr)	Power Potential (MWe)
Sarkaghat	15.7	25.2	45.3	9.0	1.2
Mandi	12.8	20.5	36.8	7.4	0.97
Sundar Nagar	10.9	17.4	30.9	6.1	0.80
Chachyot	9.6	15.5	27.9	5.6	0.73
Karsog	9.7	15.4	26.9	5.2	0.68
Thunag	8.8	13.7	23.3	4.3	0.56
Jogindarnagar	5.4	8.6	15.2	2.9	0.39
Total	72.9	116.4	206.4	40.5	5.3

DistrictLevel Taluk-wise Data for Shimla ; Season : Rabi					
Taluk	Area (kHa)	Crop Production (kT/Yr)	Biomass Generation (kT/Yr)	Biomass Surplus (kT/Yr)	Power Potential (MWe)
Jubbal	10.0	11.3	20.4	4.1	0.54
Theog	6.5	7.4	13.3	2.7	0.35
Suni	1.4	1.6	2.9	0.59	0.077
Kumharsain	2.6	2.7	4.0	0.58	0.076
Shimla Urban	1.3	1.5	2.7	0.55	0.072
Rohru	2.0	1.9	2.5	0.25	0.033
Chirgaon	0.98	0.94	1.2	0.12	0.016
Total	24.9	27.4	47.1	8.8	1.2

DistrictLevel Taluk-wise Data for Sirmaur ; Season : Rabi					
Taluk	Area (kHa)	Crop Production (kT/Yr)	Biomass Generation (kT/Yr)	Biomass Surplus (kT/Yr)	Power Potential (MWe)
Pachhad	17.4	28.8	51.8	10.4	1.4
Renuka	10.3	16.9	30.5	6.1	0.80
Shilla	2.5	2.8	3.6	0.36	0.047
Paonta	0.13	0.14	0.18	0.018	0.0024
Total	30.4	48.7	86.1	16.8	2.2

DistrictLevel Taluk-wise Data for Solan ; Season : Rabi					
Taluk	Area (kHa)	Crop Production (kT/Yr)	Biomass Generation (kT/Yr)	Biomass Surplus (kT/Yr)	Power Potential (MWe)
Nalagarh	22.0	36.2	64.6	12.8	1.7
Kasauli	2.8	4.4	7.6	1.4	0.19
Solan	0.56	0.94	1.7	0.34	0.045
Arki	0.22	0.38	0.68	0.14	0.018
Kandaghat	0.19	0.31	0.57	0.11	0.015
Total	25.8	42.2	75.1	14.8	1.9

DistrictLevel Taluk-wise Data for Una ; Season : Rabi					
Taluk	Area (kHa)	Crop Production (kT/Yr)	Biomass Generation (kT/Yr)	Biomass Surplus (kT/Yr)	Power Potential (MWe)
Una	27.7	54.9	98.9	19.8	2.6
Amb	4.5	8.8	15.9	3.2	0.42
Total	32.2	63.8	114.8	23.0	3.0

Taluk Level Residue Wise

Taluk level Residue-wise Data for Bilaspur ; Season : Rabi						
Crop	Residue	Area (kHa)	Crop Production (kT/Yr)	Biomass Generation (kT/Yr)	Biomass Surplus (kT/Yr)	Power Potential (MWe)
Wheat	Stalks	25.5	44.2	66.4	13.3	1.7
Wheat	Pod	25.5	44.2	13.3	2.7	0.37
Others	Others	0.0066	0.0088	0.011	0.0011	0.00015
Total		25.5	44.2	79.6	15.9	2.1

Taluk level Residue-wise Data for Ghumarwin ; Season : Rabi						
Crop	Residue	Area (kHa)	Crop Production (kT/Yr)	Biomass Generation (kT/Yr)	Biomass Surplus (kT/Yr)	Power Potential (MWe)
Wheat	Stalks	1.6	2.7	4.0	0.81	0.11
Others	Others	0.30	0.40	1.3	0.21	0.029
Total		1.8	3.1	5.4	1.0	0.13

Taluk level Residue-wise Data for Bhamaur ; Season : Rabi						
Crop	Residue	Area (kHa)	Crop Production (kT/Yr)	Biomass Generation (kT/Yr)	Biomass Surplus (kT/Yr)	Power Potential (MWe)
Others	Others	0.62	0.95	1.7	0.34	0.045
Total		0.62	0.95	1.7	0.34	0.045

Taluk level Residue-wise Data for Bhattiyat ; Season : Rabi						
Crop	Residue	Area (kHa)	Crop Production (kT/Yr)	Biomass Generation (kT/Yr)	Biomass Surplus (kT/Yr)	Power Potential (MWe)
Wheat	Stalks	1.6	2.4	3.7	0.73	0.095
Others	Others	0	0	0.73	0.15	0.021
Total		1.6	2.4	4.4	0.88	0.12

Taluk level Residue-wise Data for Chamba ; Season : Rabi						
Crop	Residue	Area (kHa)	Crop Production (kT/Yr)	Biomass Generation (kT/Yr)	Biomass Surplus (kT/Yr)	Power Potential (MWe)
Wheat	Stalks	7.4	11.4	17.2	3.4	0.45
Wheat	Pod	7.4	11.4	3.4	0.69	0.096
Others	Others	0.41	0.55	0.71	0.071	0.0093
Total		7.9	12.0	21.3	4.2	0.55

Taluk level Residue-wise Data for Chaurah ; Season : Rabi						
Crop	Residue	Area (kHa)	Crop Production (kT/Yr)	Biomass Generation (kT/Yr)	Biomass Surplus (kT/Yr)	Power Potential (MWe)
Wheat	Stalks	1.8	2.7	4.0	0.81	0.11
Others	Others	0	0	0.81	0.16	0.023
Total		1.8	2.7	4.9	0.97	0.13

Taluk level Residue-wise Data for Pangi ; Season : Rabi						
Crop	Residue	Area (kHa)	Crop Production (kT/Yr)	Biomass Generation (kT/Yr)	Biomass Surplus (kT/Yr)	Power Potential (MWe)
Wheat	Stalks	4.5	6.8	10.3	2.1	0.27
Barley	Stalks	3.5	4.6	6.0	0.60	0.079
Wheat	Pod	4.5	6.8	2.1	0.41	0.057
Total		7.9	11.5	18.3	3.1	0.40

Taluk level Residue-wise Data for Saluni ; Season : Rabi						
Crop	Residue	Area (kHa)	Crop Production (kT/Yr)	Biomass Generation (kT/Yr)	Biomass Surplus (kT/Yr)	Power Potential (MWe)
Wheat	Stalks	5.2	7.9	11.9	2.4	0.31
Wheat	Pod	5.2	7.9	2.4	0.48	0.067
Total		5.2	7.9	14.3	2.9	0.38

Taluk level Residue-wise Data for Barsar ; Season : Rabi						
Crop	Residue	Area (kHa)	Crop Production (kT/Yr)	Biomass Generation (kT/Yr)	Biomass Surplus (kT/Yr)	Power Potential (MWe)
Wheat	Stalks	3.2	3.8	5.7	1.1	0.15
Others	Others	0.0035	0.0071	1.2	0.23	0.032
Total		3.2	3.8	6.9	1.4	0.18

Taluk level Residue-wise Data for Bhoranj ; Season : Rabi						
Crop	Residue	Area (kHa)	Crop Production (kT/Yr)	Biomass Generation (kT/Yr)	Biomass Surplus (kT/Yr)	Power Potential (MWe)
Wheat	Stalks	9.5	11.5	17.3	3.5	0.45
Wheat	Pod	9.5	11.5	3.5	0.69	0.097
Total		9.5	11.5	20.7	4.1	0.55

Taluk level Residue-wise Data for Hamirpur ; Season : Rabi						
Crop	Residue	Area (kHa)	Crop Production (kT/Yr)	Biomass Generation (kT/Yr)	Biomass Surplus (kT/Yr)	Power Potential (MWe)
Wheat	Stalks	20.7	25.0	37.6	7.5	0.98
Wheat	Pod	20.7	25.0	7.5	1.5	0.21
Others	Others	0.097	0.19	0.25	0.025	0.0033
Total		20.8	25.2	45.3	9.0	1.2

Taluk level Residue-wise Data for Nadaun ; Season : Rabi						
Crop	Residue	Area (kHa)	Crop Production (kT/Yr)	Biomass Generation (kT/Yr)	Biomass Surplus (kT/Yr)	Power Potential (MWe)
Wheat	Stalks	2.3	2.7	4.1	0.82	0.11
Others	Others	0	0	0.82	0.16	0.023
Total		2.3	2.7	4.9	0.99	0.13

Taluk level Residue-wise Data for Baijnath ; Season : Rabi						
Crop	Residue	Area (kHa)	Crop Production (kT/Yr)	Biomass Generation (kT/Yr)	Biomass Surplus (kT/Yr)	Power Potential (MWe)
Wheat	Stalks	3.3	5.1	7.6	1.5	0.20
Others	Others	0	0	1.5	0.30	0.043
Total		3.3	5.1	9.1	1.8	0.24

Taluk level Residue-wise Data for Baroh ; Season : Rabi						
Crop	Residue	Area (kHa)	Crop Production (kT/Yr)	Biomass Generation (kT/Yr)	Biomass Surplus (kT/Yr)	Power Potential (MWe)
Others	Others	0.10	0.16	0.28	0.056	0.0074
Total		0.10	0.16	0.28	0.056	0.0074

Taluk level Residue-wise Data for Dera Gopipur ; Season : Rabi						
Crop	Residue	Area (kHa)	Crop Production (kT/Yr)	Biomass Generation (kT/Yr)	Biomass Surplus (kT/Yr)	Power Potential (MWe)
Wheat	Stalks	31.8	48.6	72.9	14.6	1.9
Wheat	Pod	31.8	48.6	14.6	2.9	0.41
Others	Others	0.062	0.076	0.099	0.0099	0.0013
Total		31.9	48.7	87.6	17.5	2.3

Taluk level Residue-wise Data for Dharmshala ; Season : Rabi						
Crop	Residue	Area (kHa)	Crop Production (kT/Yr)	Biomass Generation (kT/Yr)	Biomass Surplus (kT/Yr)	Power Potential (MWe)
Wheat	Stalks	4.5	6.9	10.3	2.1	0.27
Wheat	Pod	4.5	6.9	2.1	0.41	0.058
Total		4.5	6.9	12.4	2.5	0.33

Taluk level Residue-wise Data for Indora ; Season : Rabi						
Crop	Residue	Area (kHa)	Crop Production (kT/Yr)	Biomass Generation (kT/Yr)	Biomass Surplus (kT/Yr)	Power Potential (MWe)
Wheat	Stalks	8.6	13.1	19.7	3.9	0.51
Wheat	Pod	8.6	13.1	3.9	0.79	0.11
Total		8.6	13.1	23.6	4.7	0.62

Taluk level Residue-wise Data for Jaisinghpur ; Season : Rabi						
Crop	Residue	Area (kHa)	Crop Production (kT/Yr)	Biomass Generation (kT/Yr)	Biomass Surplus (kT/Yr)	Power Potential (MWe)
Wheat	Stalks	4.9	7.5	11.3	2.3	0.29
Wheat	Pod	4.9	7.5	2.3	0.45	0.063
Total		4.9	7.5	13.5	2.7	0.36

Taluk level Residue-wise Data for Jaswan ; Season : Rabi						
Crop	Residue	Area (kHa)	Crop Production (kT/Yr)	Biomass Generation (kT/Yr)	Biomass Surplus (kT/Yr)	Power Potential (MWe)
Wheat	Stalks	4.4	6.7	10.1	2.0	0.26
Wheat	Pod	4.4	6.7	2.0	0.40	0.056
Others	Others	0.49	0.60	0.78	0.078	0.010
Total		4.9	7.3	12.8	2.5	0.33

Taluk level Residue-wise Data for Jawali ; Season : Rabi						
Crop	Residue	Area (kHa)	Crop Production (kT/Yr)	Biomass Generation (kT/Yr)	Biomass Surplus (kT/Yr)	Power Potential (MWe)
Wheat	Stalks	5.1	7.7	11.6	2.3	0.30
Wheat	Pod	5.1	7.7	2.3	0.46	0.065
Total		5.1	7.7	13.9	2.8	0.37

Taluk level Residue-wise Data for Kangra ; Season : Rabi						
Crop	Residue	Area (kHa)	Crop Production (kT/Yr)	Biomass Generation (kT/Yr)	Biomass Surplus (kT/Yr)	Power Potential (MWe)
Wheat	Stalks	16.1	24.6	36.9	7.4	0.96
Wheat	Pod	16.1	24.6	7.4	1.5	0.21
Total		16.1	24.6	44.2	8.8	1.2

Taluk level Residue-wise Data for Nurpur ; Season : Rabi						
Crop	Residue	Area (kHa)	Crop Production (kT/Yr)	Biomass Generation (kT/Yr)	Biomass Surplus (kT/Yr)	Power Potential (MWe)
Wheat	Stalks	8.9	13.6	20.4	4.1	0.53
Wheat	Pod	8.9	13.6	4.1	0.82	0.11
Barley	Stalks	2.5	3.1	4.0	0.40	0.052
Total		11.4	16.7	28.5	5.3	0.70

Taluk level Residue-wise Data for Palampur ; Season : Rabi						
Crop	Residue	Area (kHa)	Crop Production (kT/Yr)	Biomass Generation (kT/Yr)	Biomass Surplus (kT/Yr)	Power Potential (MWe)
Wheat	Stalks	7.6	11.7	17.5	3.5	0.46
Wheat	Pod	7.6	11.7	3.5	0.70	0.098
Total		7.6	11.7	21.0	4.2	0.55

Taluk level Residue-wise Data for Morang ; Season : Rabi						
Crop	Residue	Area (kHa)	Crop Production (kT/Yr)	Biomass Generation (kT/Yr)	Biomass Surplus (kT/Yr)	Power Potential (MWe)
Others	Others	0.36	0.54	0.98	0.20	0.026
Total		0.36	0.54	0.98	0.20	0.026

Taluk level Residue-wise Data for Sangla ; Season : Rabi						
Crop	Residue	Area (kHa)	Crop Production (kT/Yr)	Biomass Generation (kT/Yr)	Biomass Surplus (kT/Yr)	Power Potential (MWe)
Others	Others	1.4	2.0	2.6	0.27	0.035
Total		1.4	2.0	2.6	0.27	0.035

Taluk level Residue-wise Data for Ani ; Season : Rabi						
Crop	Residue	Area (kHa)	Crop Production (kT/Yr)	Biomass Generation (kT/Yr)	Biomass Surplus (kT/Yr)	Power Potential (MWe)
Others	Others	0.81	1.3	1.9	0.28	0.037
Total		0.81	1.3	1.9	0.28	0.037

Taluk level Residue-wise Data for Banjar ; Season : Rabi						
Crop	Residue	Area (kHa)	Crop Production (kT/Yr)	Biomass Generation (kT/Yr)	Biomass Surplus (kT/Yr)	Power Potential (MWe)
Wheat	Stalks	2.5	4.2	6.3	1.3	0.16
Others	Others	1.4	2.0	3.9	0.52	0.069
Total		3.9	6.2	10.2	1.8	0.23

Taluk level Residue-wise Data for Kullu ; Season : Rabi						
Crop	Residue	Area (kHa)	Crop Production (kT/Yr)	Biomass Generation (kT/Yr)	Biomass Surplus (kT/Yr)	Power Potential (MWe)
Wheat	Stalks	17.8	29.8	44.6	8.9	1.2
Wheat	Pod	17.8	29.8	8.9	1.8	0.25
Others	Others	1.6	2.4	3.2	0.32	0.041
Total		19.5	32.2	56.7	11.0	1.5

Taluk level Residue-wise Data for Nermand ; Season : Rabi						
Crop	Residue	Area (kHa)	Crop Production (kT/Yr)	Biomass Generation (kT/Yr)	Biomass Surplus (kT/Yr)	Power Potential (MWe)
Others	Others	0.75	1.2	2.1	0.38	0.050
Total		0.75	1.2	2.1	0.38	0.050

Taluk level Residue-wise Data for Lahul ; Season : Rabi						
Crop	Residue	Area (kHa)	Crop Production (kT/Yr)	Biomass Generation (kT/Yr)	Biomass Surplus (kT/Yr)	Power Potential (MWe)
Others	Others	0.75	0.61	0.84	0.10	0.013
Total		0.75	0.61	0.84	0.10	0.013

Taluk level Residue-wise Data for Spiti ; Season : Rabi						
Crop	Residue	Area (kHa)	Crop Production (kT/Yr)	Biomass Generation (kT/Yr)	Biomass Surplus (kT/Yr)	Power Potential (MWe)
Others	Others	0.0011	0.00093	0.0012	0.00012	1.57E-05
Total		0.0011	0.00093	0.0012	0.00012	1.57E-05

Taluk level Residue-wise Data for Chachyot ; Season : Rabi						
Crop	Residue	Area (kHa)	Crop Production (kT/Yr)	Biomass Generation (kT/Yr)	Biomass Surplus (kT/Yr)	Power Potential (MWe)
Wheat	Stalks	9.6	15.5	23.2	4.6	0.60
Wheat	Pod	9.6	15.5	4.6	0.93	0.13
Others	Others	0.033	0.047	0.061	0.0061	0.00079
Total		9.6	15.5	27.9	5.6	0.73

Taluk level Residue-wise Data for Jogindarnagar ; Season : Rabi						
Crop	Residue	Area (kHa)	Crop Production (kT/Yr)	Biomass Generation (kT/Yr)	Biomass Surplus (kT/Yr)	Power Potential (MWe)
Wheat	Stalks	4.9	8.0	11.9	2.4	0.31
Wheat	Pod	4.9	8.0	2.4	0.48	0.067
Others	Others	0.47	0.66	0.86	0.086	0.011
Total		5.4	8.6	15.2	2.9	0.39

Taluk level Residue-wise Data for Karsog ; Season : Rabi						
Crop	Residue	Area (kHa)	Crop Production (kT/Yr)	Biomass Generation (kT/Yr)	Biomass Surplus (kT/Yr)	Power Potential (MWe)
Wheat	Stalks	8.6	13.9	20.8	4.2	0.54
Wheat	Pod	8.6	13.9	4.2	0.83	0.12
Others	Others	1.1	1.5	2.0	0.20	0.025
Total		9.7	15.4	26.9	5.2	0.68

Taluk level Residue-wise Data for Mandi ; Season : Rabi						
Crop	Residue	Area (kHa)	Crop Production (kT/Yr)	Biomass Generation (kT/Yr)	Biomass Surplus (kT/Yr)	Power Potential (MWe)
Wheat	Stalks	12.7	20.4	30.5	6.1	0.79
Wheat	Pod	12.7	20.4	6.1	1.2	0.17
Others	Others	0.11	0.15	0.19	0.019	0.0025
Total		12.8	20.5	36.8	7.4	0.97

Taluk level Residue-wise Data for Sarkaghat ; Season : Rabi						
Crop	Residue	Area (kHa)	Crop Production (kT/Yr)	Biomass Generation (kT/Yr)	Biomass Surplus (kT/Yr)	Power Potential (MWe)
Wheat	Stalks	15.6	25.0	37.6	7.5	0.98
Wheat	Pod	15.6	25.0	7.5	1.5	0.21
Others	Others	0.14	0.20	0.25	0.025	0.0033
Total		15.7	25.2	45.3	9.0	1.2

Taluk level Residue-wise Data for Sundar Nagar ; Season : Rabi						
Crop	Residue	Area (kHa)	Crop Production (kT/Yr)	Biomass Generation (kT/Yr)	Biomass Surplus (kT/Yr)	Power Potential (MWe)
Wheat	Stalks	10.3	16.6	24.9	5.0	0.65
Wheat	Pod	10.3	16.6	5.0	1.00	0.14
Others	Others	0.54	0.77	1.0	0.10	0.013
Total		10.9	17.4	30.9	6.1	0.80

Taluk level Residue-wise Data for Thunag ; Season : Rabi						
Crop	Residue	Area (kHa)	Crop Production (kT/Yr)	Biomass Generation (kT/Yr)	Biomass Surplus (kT/Yr)	Power Potential (MWe)
Wheat	Stalks	6.8	10.9	16.4	3.3	0.43
Wheat	Pod	6.8	10.9	3.3	0.65	0.092
Others	Others	2.0	2.8	3.7	0.37	0.048
Total		8.8	13.7	23.3	4.3	0.56

Taluk level Residue-wise Data for Chirgaon ; Season : Rabi						
Crop	Residue	Area (kHa)	Crop Production (kT/Yr)	Biomass Generation (kT/Yr)	Biomass Surplus (kT/Yr)	Power Potential (MWe)
Others	Others	0.98	0.94	1.2	0.12	0.016
Total		0.98	0.94	1.2	0.12	0.016

Taluk level Residue-wise Data for Jubbal ; Season : Rabi						
Crop	Residue	Area (kHa)	Crop Production (kT/Yr)	Biomass Generation (kT/Yr)	Biomass Surplus (kT/Yr)	Power Potential (MWe)
Wheat	Stalks	10.0	11.3	17.0	3.4	0.44
Wheat	Pod	10.0	11.3	3.4	0.68	0.095
Total		10.0	11.3	20.4	4.1	0.54

Taluk level Residue-wise Data for Kumharsain ; Season : Rabi						
Crop	Residue	Area (kHa)	Crop Production (kT/Yr)	Biomass Generation (kT/Yr)	Biomass Surplus (kT/Yr)	Power Potential (MWe)
Others	Others	2.6	2.7	4.0	0.58	0.076
Total		2.6	2.7	4.0	0.58	0.076

Taluk level Residue-wise Data for Rohru ; Season : Rabi						
Crop	Residue	Area (kHa)	Crop Production (kT/Yr)	Biomass Generation (kT/Yr)	Biomass Surplus (kT/Yr)	Power Potential (MWe)
Others	Others	2.0	1.9	2.5	0.25	0.033
Total		2.0	1.9	2.5	0.25	0.033

Taluk level Residue-wise Data for Shimla Urban ; Season : Rabi						
Crop	Residue	Area (kHa)	Crop Production (kT/Yr)	Biomass Generation (kT/Yr)	Biomass Surplus (kT/Yr)	Power Potential (MWe)
Wheat	Stalks	1.3	1.5	2.3	0.46	0.059
Others	Others	0	0	0.46	0.092	0.013
Total		1.3	1.5	2.7	0.55	0.072

Taluk level Residue-wise Data for Suni ; Season : Rabi						
Crop	Residue	Area (kHa)	Crop Production (kT/Yr)	Biomass Generation (kT/Yr)	Biomass Surplus (kT/Yr)	Power Potential (MWe)
Wheat	Stalks	1.4	1.6	2.5	0.49	0.064
Others	Others	0	0	0.49	0.098	0.014
Total		1.4	1.6	2.9	0.59	0.077

Taluk level Residue-wise Data for Theog ; Season : Rabi						
Crop	Residue	Area (kHa)	Crop Production (kT/Yr)	Biomass Generation (kT/Yr)	Biomass Surplus (kT/Yr)	Power Potential (MWe)
Wheat	Stalks	6.5	7.4	11.1	2.2	0.29
Wheat	Pod	6.5	7.4	2.2	0.44	0.062
Total		6.5	7.4	13.3	2.7	0.35

Taluk level Residue-wise Data for Pachhad ; Season : Rabi						
Crop	Residue	Area (kHa)	Crop Production (kT/Yr)	Biomass Generation (kT/Yr)	Biomass Surplus (kT/Yr)	Power Potential (MWe)
Wheat	Stalks	17.4	28.8	43.2	8.6	1.1
Wheat	Pod	17.4	28.8	8.6	1.7	0.24
Total		17.4	28.8	51.8	10.4	1.4

Taluk level Residue-wise Data for Paonta ; Season : Rabi						
Crop	Residue	Area (kHa)	Crop Production (kT/Yr)	Biomass Generation (kT/Yr)	Biomass Surplus (kT/Yr)	Power Potential (MWe)
Others	Others	0.13	0.14	0.18	0.018	0.0024
Total		0.13	0.14	0.18	0.018	0.0024

Taluk level Residue-wise Data for Renuka ; Season : Rabi						
Crop	Residue	Area (kHa)	Crop Production (kT/Yr)	Biomass Generation (kT/Yr)	Biomass Surplus (kT/Yr)	Power Potential (MWe)
Wheat	Stalks	10.3	16.9	25.4	5.1	0.66
Wheat	Pod	10.3	16.9	5.1	1.0	0.14
Total		10.3	16.9	30.5	6.1	0.80

Taluk level Residue-wise Data for Shilla ; Season : Rabi						
Crop	Residue	Area (kHa)	Crop Production (kT/Yr)	Biomass Generation (kT/Yr)	Biomass Surplus (kT/Yr)	Power Potential (MWe)
Others	Others	2.5	2.8	3.6	0.36	0.047
Total		2.5	2.8	3.6	0.36	0.047

Taluk level Residue-wise Data for Arki ; Season : Rabi						
Crop	Residue	Area (kHa)	Crop Production (kT/Yr)	Biomass Generation (kT/Yr)	Biomass Surplus (kT/Yr)	Power Potential (MWe)
Others	Others	0.22	0.38	0.68	0.14	0.018
Total		0.22	0.38	0.68	0.14	0.018

Taluk level Residue-wise Data for Kandaghat ; Season : Rabi						
Crop	Residue	Area (kHa)	Crop Production (kT/Yr)	Biomass Generation (kT/Yr)	Biomass Surplus (kT/Yr)	Power Potential (MWe)
Others	Others	0.19	0.31	0.57	0.11	0.015
Total		0.19	0.31	0.57	0.11	0.015

Taluk level Residue-wise Data for Kasauli ; Season : Rabi						
Crop	Residue	Area (kHa)	Crop Production (kT/Yr)	Biomass Generation (kT/Yr)	Biomass Surplus (kT/Yr)	Power Potential (MWe)
Wheat	Stalks	2.2	3.7	5.6	1.1	0.15
Others	Others	0.63	0.67	2.0	0.31	0.043
Total		2.8	4.4	7.6	1.4	0.19

Taluk level Residue-wise Data for Nalagarh ; Season : Rabi						
Crop	Residue	Area (kHa)	Crop Production (kT/Yr)	Biomass Generation (kT/Yr)	Biomass Surplus (kT/Yr)	Power Potential (MWe)
Wheat	Stalks	20.9	35.0	52.6	10.5	1.4
Wheat	Pod	20.9	35.0	10.5	2.1	0.29
Others	Others	1.1	1.2	1.5	0.15	0.020
Total		22.0	36.2	64.6	12.8	1.7

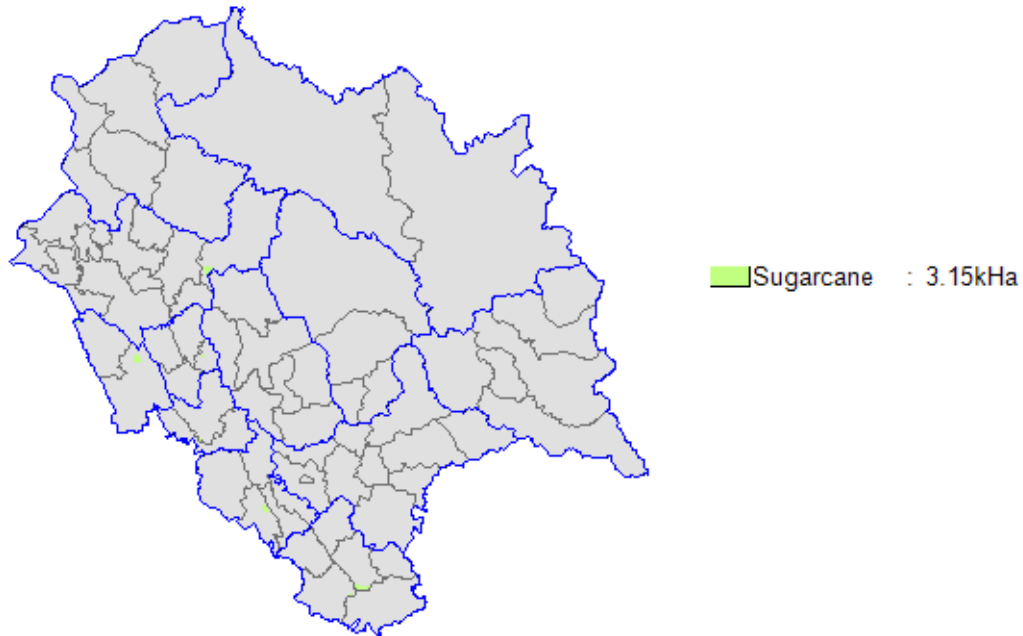
Taluk level Residue-wise Data for Solan ; Season : Rabi						
Crop	Residue	Area (kHa)	Crop Production (kT/Yr)	Biomass Generation (kT/Yr)	Biomass Surplus (kT/Yr)	Power Potential (MWe)
Others	Others	0.56	0.94	1.7	0.34	0.045
Total		0.56	0.94	1.7	0.34	0.045

Taluk level Residue-wise Data for Amb ; Season : Rabi						
Crop	Residue	Area (kHa)	Crop Production (kT/Yr)	Biomass Generation (kT/Yr)	Biomass Surplus (kT/Yr)	Power Potential (MWe)
Wheat	Stalks	4.5	8.8	13.2	2.6	0.34
Wheat	Pod	4.5	8.8	2.6	0.53	0.074
Total		4.5	8.8	15.9	3.2	0.42

Taluk level Residue-wise Data for Una ; Season : Rabi						
Crop	Residue	Area (kHa)	Crop Production (kT/Yr)	Biomass Generation (kT/Yr)	Biomass Surplus (kT/Yr)	Power Potential (MWe)
Wheat	Stalks	27.7	54.9	82.4	16.5	2.1
Wheat	Pod	27.7	54.9	16.5	3.3	0.46
Total		27.7	54.9	98.9	19.8	2.6

Yearly

Himachal Pradesh-Yearly



State Level Residue Wise

State level Residue-wise Data for Himachal Pradesh; Season : Yearly						
Crop	Residue	Area (kHa)	Crop Production (kT/Yr)	Biomass Generation (kT/Yr)	Biomass Surplus (kT/Yr)	Power Potential (MWe)
Sugarcane	Tops & Leaves	3.2	68.6	3.4	0.69	0.096
Total		3.2	68.6	3.4	0.69	0.096

State Level District Wise

State level District-wise Data for Himachal Pradesh ; Season : Yearly					
District	Area (kHa)	Crop Production (kT/Yr)	Biomass Generation (kT/Yr)	Biomass Surplus (kT/Yr)	Power Potential (MWe)
Sirmaur	1.5	45.9	2.3	0.46	0.064
Una	0.61	10.7	0.53	0.11	0.015
Kangra	0.51	8.6	0.43	0.086	0.012
Solan	0.30	2.4	0.12	0.024	0.0034
Hamirpur	0.10	0.51	0.025	0.0051	0.00071
Bilaspur	0.10	0.51	0.025	0.0051	0.00071
Total	3.2	68.6	3.4	0.69	0.096

State Level Taluk Wise

State level Taluk-wise Data for Himachal Pradesh ; Season : Yearly						
District	Taluk	Area (kHa)	Crop Production (kT/Yr)	Biomass Generation (kT/Yr)	Biomass Surplus (kT/Yr)	Power Potential (MWe)
Sirmaur	Renuka	1.5	44.3	2.2	0.44	0.062
Una	Una	0.52	9.2	0.46	0.092	0.013
Kangra	Baijnath	0.49	8.2	0.41	0.082	0.012
Solan	Kasauli	0.30	2.4	0.12	0.024	0.0034
Sirmaur	Nahan	0.053	1.6	0.080	0.016	0.0022
Una	Amb	0.084	1.5	0.074	0.015	0.0021
Bilaspur	Ghumarwin	0.10	0.51	0.025	0.0051	0.00071
Hamirpur	Bhoranj	0.098	0.49	0.024	0.0049	0.00068
Kangra	Jawali	0.021	0.35	0.017	0.0035	0.00049
Hamirpur	Hamirpur	0.0044	0.022	0.0011	0.00022	3.06E-05
Total		3.2	68.6	3.4	0.69	0.096

District Level Residue Wise

District level Residue-wise Data for Bilaspur; Season : Yearly						
Crop	Residue	Area (kHa)	Crop Production (kT/Yr)	Biomass Generation (kT/Yr)	Biomass Surplus (kT/Yr)	Power Potential (MWe)
Others	Others	0.10	0.51	0.025	0.0051	0.00071
Total		0.10	0.51	0.025	0.0051	0.00071

District level Residue-wise Data for Hamirpur; Season : Yearly						
Crop	Residue	Area (kHa)	Crop Production (kT/Yr)	Biomass Generation (kT/Yr)	Biomass Surplus (kT/Yr)	Power Potential (MWe)
Others	Others	0.10	0.51	0.025	0.0051	0.00071
Total		0.10	0.51	0.025	0.0051	0.00071

District level Residue-wise Data for Kangra; Season : Yearly						
Crop	Residue	Area (kHa)	Crop Production (kT/Yr)	Biomass Generation (kT/Yr)	Biomass Surplus (kT/Yr)	Power Potential (MWe)
Others	Others	0.51	8.6	0.43	0.086	0.012
Total		0.51	8.6	0.43	0.086	0.012

District level Residue-wise Data for Sirmaur; Season : Yearly						
Crop	Residue	Area (kHa)	Crop Production (kT/Yr)	Biomass Generation (kT/Yr)	Biomass Surplus (kT/Yr)	Power Potential (MWe)
Sugarcane	Tops & Leaves	1.5	45.9	2.3	0.46	0.064
Total		1.5	45.9	2.3	0.46	0.064

District level Residue-wise Data for Solan; Season : Yearly						
Crop	Residue	Area (kHa)	Crop Production (kT/Yr)	Biomass Generation (kT/Yr)	Biomass Surplus (kT/Yr)	Power Potential (MWe)
Others	Others	0.30	2.4	0.12	0.024	0.0034
Total		0.30	2.4	0.12	0.024	0.0034

District level Residue-wise Data for Una; Season : Yearly						
Crop	Residue	Area (kHa)	Crop Production (kT/Yr)	Biomass Generation (kT/Yr)	Biomass Surplus (kT/Yr)	Power Potential (MWe)
Others	Others	0.61	10.7	0.53	0.11	0.015
Total		0.61	10.7	0.53	0.11	0.015

District Level Taluk Wise

DistrictLevel Taluk-wise Data for Bilaspur ; Season : Yearly					
Taluk	Area (kHa)	Crop Production (kT/Yr)	Biomass Generation (kT/Yr)	Biomass Surplus (kT/Yr)	Power Potential (MWe)
Ghumarwin	0.10	0.51	0.025	0.0051	0.00071
Total	0.10	0.51	0.025	0.0051	0.00071

DistrictLevel Taluk-wise Data for Hamirpur ; Season : Yearly					
Taluk	Area (kHa)	Crop Production (kT/Yr)	Biomass Generation (kT/Yr)	Biomass Surplus (kT/Yr)	Power Potential (MWe)
Bhoranj	0.098	0.49	0.024	0.0049	0.00068
Hamirpur	0.0044	0.022	0.0011	0.00022	3.06E-05
Total	0.10	0.51	0.025	0.0051	0.00071

DistrictLevel Taluk-wise Data for Kangra ; Season : Yearly					
Taluk	Area (kHa)	Crop Production (kT/Yr)	Biomass Generation (kT/Yr)	Biomass Surplus (kT/Yr)	Power Potential (MWe)
Bajnath	0.49	8.2	0.41	0.082	0.012
Jawali	0.021	0.35	0.017	0.0035	0.00049
Total	0.51	8.6	0.43	0.086	0.012

DistrictLevel Taluk-wise Data for Sirmaur ; Season : Yearly					
Taluk	Area (kHa)	Crop Production (kT/Yr)	Biomass Generation (kT/Yr)	Biomass Surplus (kT/Yr)	Power Potential (MWe)
Renuka	1.5	44.3	2.2	0.44	0.062
Nahan	0.053	1.6	0.080	0.016	0.0022
Total	1.5	45.9	2.3	0.46	0.064

DistrictLevel Taluk-wise Data for Solan ; Season : Yearly					
Taluk	Area (kHa)	Crop Production (kT/Yr)	Biomass Generation (kT/Yr)	Biomass Surplus (kT/Yr)	Power Potential (MWe)
Kasauli	0.30	2.4	0.12	0.024	0.0034
Total	0.30	2.4	0.12	0.024	0.0034

DistrictLevel Taluk-wise Data for Una ; Season : Yearly					
Taluk	Area (kHa)	Crop Production (kT/Yr)	Biomass Generation (kT/Yr)	Biomass Surplus (kT/Yr)	Power Potential (MWe)
Una	0.52	9.2	0.46	0.092	0.013
Amb	0.084	1.5	0.074	0.015	0.0021
Total	0.61	10.7	0.53	0.11	0.015

Taluk Level Residue Wise

Taluk level Residue-wise Data for Ghumarwin ; Season : Yearly						
Crop	Residue	Area (kHa)	Crop Production (kT/Yr)	Biomass Generation (kT/Yr)	Biomass Surplus (kT/Yr)	Power Potential (MWe)
Others	Others	0.10	0.51	0.025	0.0051	0.00071
Total		0.10	0.51	0.025	0.0051	0.00071

Taluk level Residue-wise Data for Bhoranj ; Season : Yearly						
Crop	Residue	Area (kHa)	Crop Production (kT/Yr)	Biomass Generation (kT/Yr)	Biomass Surplus (kT/Yr)	Power Potential (MWe)
Others	Others	0.098	0.49	0.024	0.0049	0.00068
Total		0.098	0.49	0.024	0.0049	0.00068

Taluk level Residue-wise Data for Hamirpur ; Season : Yearly						
Crop	Residue	Area (kHa)	Crop Production (kT/Yr)	Biomass Generation (kT/Yr)	Biomass Surplus (kT/Yr)	Power Potential (MWe)
Others	Others	0.0044	0.022	0.0011	0.00022	3.06E-05
Total		0.0044	0.022	0.0011	0.00022	3.06E-05

Taluk level Residue-wise Data for Baijnath ; Season : Yearly						
Crop	Residue	Area (kHa)	Crop Production (kT/Yr)	Biomass Generation (kT/Yr)	Biomass Surplus (kT/Yr)	Power Potential (MWe)
Others	Others	0.49	8.2	0.41	0.082	0.012
Total		0.49	8.2	0.41	0.082	0.012

Taluk level Residue-wise Data for Jawali ; Season : Yearly						
Crop	Residue	Area (kHa)	Crop Production (kT/Yr)	Biomass Generation (kT/Yr)	Biomass Surplus (kT/Yr)	Power Potential (MWe)
Others	Others	0.021	0.35	0.017	0.0035	0.00049
Total		0.021	0.35	0.017	0.0035	0.00049

Taluk level Residue-wise Data for Nahan ; Season : Yearly						
Crop	Residue	Area (kHa)	Crop Production (kT/Yr)	Biomass Generation (kT/Yr)	Biomass Surplus (kT/Yr)	Power Potential (MWe)
Others	Others	0.053	1.6	0.080	0.016	0.0022
Total		0.053	1.6	0.080	0.016	0.0022

Taluk level Residue-wise Data for Renuka ; Season : Yearly						
Crop	Residue	Area (kHa)	Crop Production (kT/Yr)	Biomass Generation (kT/Yr)	Biomass Surplus (kT/Yr)	Power Potential (MWe)
Sugarcane	Tops & Leaves	1.5	44.3	2.2	0.44	0.062
Total		1.5	44.3	2.2	0.44	0.062

Taluk level Residue-wise Data for Kasauli ; Season : Yearly						
Crop	Residue	Area (kHa)	Crop Production (kT/Yr)	Biomass Generation (kT/Yr)	Biomass Surplus (kT/Yr)	Power Potential (MWe)
Others	Others	0.30	2.4	0.12	0.024	0.0034
Total		0.30	2.4	0.12	0.024	0.0034

Taluk level Residue-wise Data for Amb ; Season : Yearly						
Crop	Residue	Area (kHa)	Crop Production (kT/Yr)	Biomass Generation (kT/Yr)	Biomass Surplus (kT/Yr)	Power Potential (MWe)
Others	Others	0.084	1.5	0.074	0.015	0.0021
Total		0.084	1.5	0.074	0.015	0.0021

Taluk level Residue-wise Data for Una ; Season : Yearly						
Crop	Residue	Area (kHa)	Crop Production (kT/Yr)	Biomass Generation (kT/Yr)	Biomass Surplus (kT/Yr)	Power Potential (MWe)
Others	Others	0.52	9.2	0.46	0.092	0.013
Total		0.52	9.2	0.46	0.092	0.013

Agro

State Level Residue Wise

State level Residue-wise Data for Himachal Pradesh; Biomass Class : Agro						
Crop	Residue	Area (kHa)	Crop Production (kT/Yr)	Biomass Generation (kT/Yr)	Biomass Surplus (kT/Yr)	Power Potential (MWe)
Maize	Stalks	302.0	686.4	1372.9	549.2	71.4
Maize	Cobs	302.0	686.4	343.2	171.6	24.0
Wheat	Stalks	373.6	587.2	880.7	176.1	22.9
Paddy	Straw	80.9	121.5	182.2	145.7	16.0
Wheat	Pod	373.6	587.2	176.1	35.2	4.9
Paddy	Husk	80.9	121.5	24.3	19.4	2.1
Barley	Stalks	26.4	32.9	42.8	4.3	0.56
Sugarcane	Tops & Leaves	3.2	68.6	3.4	0.69	0.096
Potato	Leaves	0.61	5.5	4.2	0.42	0.058
Others	Others	1.3	1.5	3.1	0.36	0.047
Total		788.0	1503.5	3033.0	1103.1	142.2

State Level District Wise

State level District-wise Data for Himachal Pradesh ; Biomass Class : Agro						
District	Area (kHa)	Crop Production (kT/Yr)	Biomass Generation (kT/Yr)	Biomass Surplus (kT/Yr)	Power Potential (MWe)	
Kangra	195.6	313.6	613.6	232.7	29.1	
Mandi	141.3	285.8	604.8	227.5	29.1	
Sirmaur	62.5	181.7	299.4	111.2	14.5	
Una	65.1	142.4	280.4	96.3	12.5	
Hamirpur	70.5	107.6	234.2	83.8	11.0	
Chamba	53.8	106.1	223.9	80.3	10.5	
Solan	54.0	103.6	217.5	78.7	10.2	
Bilaspur	55.5	102.1	218.8	74.7	9.8	
Kullu	41.6	86.5	183.0	62.0	8.1	
Shimla	45.0	69.9	150.5	54.4	7.1	
Kinnaur	2.2	3.4	5.9	1.4	0.19	
Lahul & Spiti	0.86	0.79	1.1	0.13	0.017	
Total		788.0	1503.5	3033.0	1103.1	142.2

State Level Taluk Wise

State level Taluk-wise Data for Himachal Pradesh ; Biomass Class : Agro						
District	Taluk	Area (kHa)	Crop Production (kT/Yr)	Biomass Generation (kT/Yr)	Biomass Surplus (kT/Yr)	Power Potential (MWe)
Una	Una	51.3	112.8	218.0	72.0	9.4
Bilaspur	Bilaspur	49.3	90.5	194.1	65.0	8.5
Mandi	Sarkaghat	32.9	75.4	170.8	61.8	8.2
Solan	Nalagarh	39.3	72.5	150.3	52.7	6.8
Mandi	Jogindarnagar	28.6	50.2	97.0	55.1	6.5
Kangra	Dera Gopipur	50.3	77.2	145.4	52.6	6.4
Mandi	Mandi	25.4	57.2	128.5	45.7	6.0
Chamba	Chamba	24.1	49.7	115.5	43.7	5.8
Sirmaur	Paonta	12.5	38.4	95.0	40.4	5.3
Hamirpur	Hamirpur	36.6	54.5	118.0	39.9	5.3
Kangra	Kangra	32.5	51.6	106.8	38.9	5.0
Kullu	Banjar	14.2	34.8	80.9	32.1	4.2
Kangra	Nurpur	26.2	40.7	82.7	32.7	4.1
Kangra	Jawali	18.7	30.9	68.9	27.5	3.6
Sirmaur	Renuka	17.9	77.6	71.2	24.6	3.2
Una	Amb	13.7	29.7	62.4	24.2	3.1
Kullu	Kullu	24.0	44.2	86.2	23.9	3.1
Mandi	Thunag	15.8	31.3	64.9	23.6	3.0
Sirmaur	Shilla	10.7	24.0	52.9	24.0	3.0
Hamirpur	Nadaun	12.9	22.4	54.1	21.6	2.9
Sirmaur	Pachhad	20.2	37.2	72.8	19.1	2.5
Kangra	Indora	16.8	25.7	48.9	20.4	2.5
Mandi	Chachyot	13.8	27.3	57.0	17.5	2.3
Shimla	Rohru	10.0	16.8	37.2	16.9	2.1
Kangra	Palampur	14.3	22.6	45.9	16.6	2.1
Solan	Kasauli	9.5	20.4	41.6	15.8	2.1
Hamirpur	Barsar	9.9	16.1	36.9	14.6	1.9
Mandi	Karsog	12.6	23.7	47.8	14.0	1.8
Chamba	Bhamaur	6.4	13.8	33.0	14.2	1.8
Kangra	Dharmshala	10.0	16.2	35.2	12.4	1.6
Kangra	Jaisinghpur	9.3	14.6	29.7	10.7	1.4
Mandi	Sundar Nagar	12.3	20.7	38.7	9.8	1.3
Bilaspur	Ghumarwin	6.1	11.6	24.7	9.7	1.3
Chamba	Chaurah	5.9	10.3	21.5	9.9	1.2

District	Taluk	Area (kHa)	Crop Production (kT/Yr)	Biomass Generation (kT/Yr)	Biomass Surplus (kT/Yr)	Power Potential (MWe)
Shimla	Rampur	3.1	7.1	17.8	7.5	0.99
Kangra	Baroh	4.6	6.7	11.8	8.8	0.99
Hamirpur	Bhoranj	11.3	14.6	25.2	7.7	0.94
Kangra	Jaswan	7.2	11.2	22.2	6.8	0.88
Shimla	Suni	3.8	7.1	16.7	6.4	0.84
Shimla	Kumharsain	4.9	7.9	17.2	6.1	0.81
Shimla	Theog	8.0	10.5	20.9	5.8	0.77
Chamba	Bhattiyat	3.7	11.5	17.8	5.1	0.68
Kangra	Baijnath	5.7	16.3	16.1	5.3	0.68
Solan	Solan	2.6	5.4	12.9	5.0	0.67
Shimla	Jubbal	10.1	11.7	21.4	4.5	0.59
Kullu	Nermand	2.1	5.1	11.7	4.4	0.58
Chamba	Pangi	8.2	12.2	20.2	3.8	0.50
Chamba	Saluni	5.4	8.6	15.9	3.5	0.47
Solan	Kandaghat	1.6	3.3	8.0	3.2	0.43
Shimla	Chaupal	1.1	2.5	6.4	2.7	0.35
Shimla	Chirgaon	1.9	3.0	6.3	2.2	0.30
Solan	Arki	1.0	2.1	4.7	1.9	0.25
Sirmaur	Nahan	0.89	3.4	4.5	1.8	0.24
Shimla	Shimla Urban	1.7	2.4	4.9	1.5	0.19
Kullu	Ani	1.4	2.3	4.2	1.6	0.19
Sirmaur	Rajgarh	0.37	1.2	3.0	1.2	0.16
Kinnaur	Nichar	0.41	0.91	2.3	0.96	0.13
Shimla	Kotkhai	0.32	0.63	1.5	0.69	0.089
Kinnaur	Sangla	1.4	2.0	2.6	0.27	0.035
Kinnaur	Morang	0.36	0.54	0.98	0.20	0.026
Lahul & Spiti	Lahul	0.86	0.79	1.1	0.13	0.017
Shimla	Shimla Rural	0.065	0.12	0.29	0.12	0.016
Lahul & Spiti	Spiti	0.0011	0.00093	0.0012	0.00012	1.57E-05
Total		788.0	1503.5	3033.0	1103.1	142.2

District Level Residue Wise

District level Residue-wise Data for Bilaspur; Biomass Class : Agro						
Crop	Residue	Area (kHa)	Crop Production (kT/Yr)	Biomass Generation (kT/Yr)	Biomass Surplus (kT/Yr)	Power Potential (MWe)
Maize	Stalks	26.5	51.8	103.7	41.5	5.4
Wheat	Stalks	27.0	46.9	70.4	14.1	1.8
Maize	Cobs	26.5	51.8	25.9	13.0	1.8
Wheat	Pod	27.0	46.9	14.1	2.8	0.39
Paddy	Straw	1.5	2.4	3.7	2.9	0.32
Others	Others	0.41	0.92	1.0	0.45	0.051
Total		55.5	102.1	218.8	74.7	9.8

District level Residue-wise Data for Chamba; Biomass Class : Agro						
Crop	Residue	Area (kHa)	Crop Production (kT/Yr)	Biomass Generation (kT/Yr)	Biomass Surplus (kT/Yr)	Power Potential (MWe)
Maize	Stalks	25.4	59.0	118.1	47.2	6.1
Maize	Cobs	25.4	59.0	29.5	14.8	2.1
Wheat	Stalks	21.0	32.3	48.4	9.7	1.3
Paddy	Straw	2.9	4.1	6.1	4.9	0.54
Wheat	Pod	21.0	32.3	9.7	1.9	0.27
Barley	Stalks	3.9	5.2	6.8	0.68	0.088
Paddy	Husk	2.9	4.1	0.82	0.65	0.072
Potato	Leaves	0.61	5.5	4.2	0.42	0.058
Others	Others	0	0	0.27	0.055	0.0071
Total		53.8	106.1	223.9	80.3	10.5

District level Residue-wise Data for Hamirpur; Biomass Class : Agro						
Crop	Residue	Area (kHa)	Crop Production (kT/Yr)	Biomass Generation (kT/Yr)	Biomass Surplus (kT/Yr)	Power Potential (MWe)
Maize	Stalks	32.1	59.8	119.5	47.8	6.2
Maize	Cobs	32.1	59.8	29.9	14.9	2.1
Wheat	Stalks	35.7	43.1	64.7	12.9	1.7
Paddy	Straw	2.5	4.0	6.0	4.8	0.53
Wheat	Pod	35.7	43.1	12.9	2.6	0.36
Paddy	Husk	2.5	4.0	0.81	0.64	0.071
Others	Others	0.20	0.71	0.29	0.031	0.0041
Total		70.5	107.6	234.2	83.8	11.0

District level Residue-wise Data for Kangra; Biomass Class : Agro						
Crop	Residue	Area (kHa)	Crop Production (kT/Yr)	Biomass Generation (kT/Yr)	Biomass Surplus (kT/Yr)	Power Potential (MWe)
Maize	Stalks	59.7	102.0	204.0	81.6	10.6
Paddy	Straw	36.8	53.3	80.0	64.0	7.0
Wheat	Stalks	95.4	145.7	218.5	43.7	5.7
Maize	Cobs	59.7	102.0	51.0	25.5	3.6
Wheat	Pod	95.4	145.7	43.7	8.7	1.2
Paddy	Husk	36.8	53.3	10.7	8.5	0.94
Barley	Stalks	3.1	3.8	4.9	0.49	0.064
Others	Others	0.61	8.8	0.83	0.13	0.017
Total		195.6	313.6	613.6	232.7	29.1

District level Residue-wise Data for Kinnaur; Biomass Class : Agro						
Crop	Residue	Area (kHa)	Crop Production (kT/Yr)	Biomass Generation (kT/Yr)	Biomass Surplus (kT/Yr)	Power Potential (MWe)
Maize	Stalks	0.41	0.91	1.8	0.73	0.095
Others	Others	1.8	2.5	4.0	0.69	0.093
Total		2.2	3.4	5.9	1.4	0.19

District level Residue-wise Data for Kullu; Biomass Class : Agro						
Crop	Residue	Area (kHa)	Crop Production (kT/Yr)	Biomass Generation (kT/Yr)	Biomass Surplus (kT/Yr)	Power Potential (MWe)
Maize	Stalks	15.0	43.3	86.6	34.6	4.5
Maize	Cobs	15.0	43.3	21.6	10.8	1.5
Wheat	Stalks	21.2	35.4	53.1	10.6	1.4
Wheat	Pod	21.2	35.4	10.6	2.1	0.30
Paddy	Straw	1.7	2.2	3.4	2.7	0.30
Barley	Stalks	3.7	5.5	7.1	0.71	0.093
Others	Others	0	0	0.45	0.36	0.039
Total		41.6	86.5	183.0	62.0	8.1

District level Residue-wise Data for Lahul & Spiti; Biomass Class : Agro						
Crop	Residue	Area (kHa)	Crop Production (kT/Yr)	Biomass Generation (kT/Yr)	Biomass Surplus (kT/Yr)	Power Potential (MWe)
Others	Others	0.86	0.79	1.1	0.13	0.017
Total		0.86	0.79	1.1	0.13	0.017

District level Residue-wise Data for Mandi; Biomass Class : Agro						
Crop	Residue	Area (kHa)	Crop Production (kT/Yr)	Biomass Generation (kT/Yr)	Biomass Surplus (kT/Yr)	Power Potential (MWe)
Maize	Stalks	47.2	137.6	275.1	110.1	14.3
Maize	Cobs	47.2	137.6	68.8	34.4	4.8
Wheat	Stalks	68.6	110.2	165.3	33.1	4.3
Paddy	Straw	20.8	31.2	46.8	37.4	4.1
Wheat	Pod	68.6	110.2	33.1	6.6	0.93
Paddy	Husk	20.8	31.2	6.2	5.0	0.55
Barley	Stalks	4.3	6.2	8.0	0.80	0.10
Others	Others	0.41	0.71	1.4	0.14	0.019
Total		141.3	285.8	604.8	227.5	29.1

District level Residue-wise Data for Shimla; Biomass Class : Agro						
Crop	Residue	Area (kHa)	Crop Production (kT/Yr)	Biomass Generation (kT/Yr)	Biomass Surplus (kT/Yr)	Power Potential (MWe)
Maize	Stalks	17.0	39.0	78.1	31.2	4.1
Maize	Cobs	17.0	39.0	19.5	9.8	1.4
Wheat	Stalks	20.2	22.9	34.4	6.9	0.89
Paddy	Straw	3.0	3.4	5.0	4.0	0.44
Wheat	Pod	20.2	22.9	6.9	1.4	0.19
Barley	Stalks	4.7	4.5	5.8	0.58	0.076
Paddy	Husk	3.0	3.4	0.67	0.54	0.059
Others	Others	0.20	0.10	0.15	0.015	0.0020
Total		45.0	69.9	150.5	54.4	7.1

District level Residue-wise Data for Sirmaur; Biomass Class : Agro						
Crop	Residue	Area (kHa)	Crop Production (kT/Yr)	Biomass Generation (kT/Yr)	Biomass Surplus (kT/Yr)	Power Potential (MWe)
Maize	Stalks	24.8	78.6	157.2	62.9	8.2
Maize	Cobs	24.8	78.6	39.3	19.7	2.8
Wheat	Stalks	27.7	45.7	68.6	13.7	1.8
Paddy	Straw	5.5	8.3	12.5	10.0	1.1
Wheat	Pod	27.7	45.7	13.7	2.7	0.38
Paddy	Husk	5.5	8.3	1.7	1.3	0.15
Sugarcane	Tops & Leaves	1.5	45.9	2.3	0.46	0.064
Others	Others	3.0	3.2	4.2	0.42	0.054
Total		62.5	181.7	299.4	111.2	14.5

District level Residue-wise Data for Solan; Biomass Class : Agro						
Crop	Residue	Area (kHa)	Crop Production (kT/Yr)	Biomass Generation (kT/Yr)	Biomass Surplus (kT/Yr)	Power Potential (MWe)
Maize	Stalks	24.3	52.4	104.8	41.9	5.5
Maize	Cobs	24.3	52.4	26.2	13.1	1.8
Wheat	Stalks	24.1	40.4	60.6	12.1	1.6
Paddy	Straw	3.5	6.5	9.7	7.8	0.86
Wheat	Pod	24.1	40.4	12.1	2.4	0.34
Paddy	Husk	3.5	6.5	1.3	1.0	0.11
Others	Others	2.1	4.3	2.7	0.30	0.040
Total		54.0	103.6	217.5	78.7	10.2

District level Residue-wise Data for Una; Biomass Class : Agro						
Crop	Residue	Area (kHa)	Crop Production (kT/Yr)	Biomass Generation (kT/Yr)	Biomass Surplus (kT/Yr)	Power Potential (MWe)
Maize	Stalks	29.5	62.0	123.9	49.6	6.4
Wheat	Stalks	32.2	63.8	95.6	19.1	2.5
Maize	Cobs	29.5	62.0	31.0	15.5	2.2
Paddy	Straw	2.7	6.0	9.0	7.2	0.79
Wheat	Pod	32.2	63.8	19.1	3.8	0.54
Paddy	Husk	2.7	6.0	1.2	0.96	0.11
Others	Others	0.61	10.7	0.53	0.11	0.015
Total		65.1	142.4	280.4	96.3	12.5

District Level Taluk Wise

DistrictLevel Taluk-wise Data for Bilaspur ; Biomass Class : Agro					
Taluk	Area (kHa)	Crop Production (kT/Yr)	Biomass Generation (kT/Yr)	Biomass Surplus (kT/Yr)	Power Potential (MWe)
Bilaspur	49.3	90.5	194.1	65.0	8.5
Ghumarwin	6.1	11.6	24.7	9.7	1.3
Total	55.5	102.1	218.8	74.7	9.8

DistrictLevel Taluk-wise Data for Chamba ; Biomass Class : Agro					
Taluk	Area (kHa)	Crop Production (kT/Yr)	Biomass Generation (kT/Yr)	Biomass Surplus (kT/Yr)	Power Potential (MWe)
Chamba	24.1	49.7	115.5	43.7	5.8
Bhamaur	6.4	13.8	33.0	14.2	1.8
Chaurah	5.9	10.3	21.5	9.9	1.2
Bhattiyat	3.7	11.5	17.8	5.1	0.68
Pangi	8.2	12.2	20.2	3.8	0.50
Saluni	5.4	8.6	15.9	3.5	0.47
Total	53.8	106.1	223.9	80.3	10.5

DistrictLevel Taluk-wise Data for Hamirpur ; Biomass Class : Agro					
Taluk	Area (kHa)	Crop Production (kT/Yr)	Biomass Generation (kT/Yr)	Biomass Surplus (kT/Yr)	Power Potential (MWe)
Hamirpur	36.6	54.5	118.0	39.9	5.3
Nadaun	12.9	22.4	54.1	21.6	2.9
Barsar	9.9	16.1	36.9	14.6	1.9
Bhoranj	11.3	14.6	25.2	7.7	0.94
Total	70.5	107.6	234.2	83.8	11.0

DistrictLevel Taluk-wise Data for Kangra ; Biomass Class : Agro					
Taluk	Area (kHa)	Crop Production (kT/Yr)	Biomass Generation (kT/Yr)	Biomass Surplus (kT/Yr)	Power Potential (MWe)
Dera Gopipur	50.3	77.2	145.4	52.6	6.4
Kangra	32.5	51.6	106.8	38.9	5.0
Nurpur	26.2	40.7	82.7	32.7	4.1
Jawali	18.7	30.9	68.9	27.5	3.6
Indora	16.8	25.7	48.9	20.4	2.5
Palampur	14.3	22.6	45.9	16.6	2.1
Dharmshala	10.0	16.2	35.2	12.4	1.6
Jaisinghpur	9.3	14.6	29.7	10.7	1.4
Baroh	4.6	6.7	11.8	8.8	0.99
Jaswan	7.2	11.2	22.2	6.8	0.88
Baijnath	5.7	16.3	16.1	5.3	0.68
Total	195.6	313.6	613.6	232.7	29.1

DistrictLevel Taluk-wise Data for Kinnaur ; Biomass Class : Agro					
Taluk	Area (kHa)	Crop Production (kT/Yr)	Biomass Generation (kT/Yr)	Biomass Surplus (kT/Yr)	Power Potential (MWe)
Nichar	0.41	0.91	2.3	0.96	0.13
Sangla	1.4	2.0	2.6	0.27	0.035
Morang	0.36	0.54	0.98	0.20	0.026
Total	2.2	3.4	5.9	1.4	0.19

DistrictLevel Taluk-wise Data for Kullu ; Biomass Class : Agro					
Taluk	Area (kHa)	Crop Production (kT/Yr)	Biomass Generation (kT/Yr)	Biomass Surplus (kT/Yr)	Power Potential (MWe)
Banjar	14.2	34.8	80.9	32.1	4.2
Kullu	24.0	44.2	86.2	23.9	3.1
Nermand	2.1	5.1	11.7	4.4	0.58
Ani	1.4	2.3	4.2	1.6	0.19
Total	41.6	86.5	183.0	62.0	8.1

DistrictLevel Taluk-wise Data for Lahul & Spiti ; Biomass Class : Agro					
Taluk	Area (kHa)	Crop Production (kT/Yr)	Biomass Generation (kT/Yr)	Biomass Surplus (kT/Yr)	Power Potential (MWe)
Lahul	0.86	0.79	1.1	0.13	0.017
Spiti	0.0011	0.00093	0.0012	0.00012	1.57E-05
Total	0.86	0.79	1.1	0.13	0.017

DistrictLevel Taluk-wise Data for Mandi ; Biomass Class : Agro					
Taluk	Area (kHa)	Crop Production (kT/Yr)	Biomass Generation (kT/Yr)	Biomass Surplus (kT/Yr)	Power Potential (MWe)
Sarkaghat	32.9	75.4	170.8	61.8	8.2
Jogindarnagar	28.6	50.2	97.0	55.1	6.5
Mandi	25.4	57.2	128.5	45.7	6.0
Thunag	15.8	31.3	64.9	23.6	3.0
Chachyot	13.8	27.3	57.0	17.5	2.3
Karsog	12.6	23.7	47.8	14.0	1.8
Sundar Nagar	12.3	20.7	38.7	9.8	1.3
Total	141.3	285.8	604.8	227.5	29.1

DistrictLevel Taluk-wise Data for Shimla ; Biomass Class : Agro					
Taluk	Area (kHa)	Crop Production (kT/Yr)	Biomass Generation (kT/Yr)	Biomass Surplus (kT/Yr)	Power Potential (MWe)
Rohru	10.0	16.8	37.2	16.9	2.1
Rampur	3.1	7.1	17.8	7.5	0.99
Suni	3.8	7.1	16.7	6.4	0.84

Kumharsain	4.9	7.9	17.2	6.1	0.81
Theog	8.0	10.5	20.9	5.8	0.77
Jubbal	10.1	11.7	21.4	4.5	0.59
Chaupal	1.1	2.5	6.4	2.7	0.35
Chirgaon	1.9	3.0	6.3	2.2	0.30
Shimla Urban	1.7	2.4	4.9	1.5	0.19
Kotkhai	0.32	0.63	1.5	0.69	0.089
Shimla Rural	0.065	0.12	0.29	0.12	0.016
Total	45.0	69.9	150.5	54.4	7.1

DistrictLevel Taluk-wise Data for Sirmaur ; Biomass Class : Agro					
Taluk	Area (kHa)	Crop Production (kT/Yr)	Biomass Generation (kT/Yr)	Biomass Surplus (kT/Yr)	Power Potential (MWe)
Paonta	12.5	38.4	95.0	40.4	5.3
Renuka	17.9	77.6	71.2	24.6	3.2
Shilla	10.7	24.0	52.9	24.0	3.0
Pachhad	20.2	37.2	72.8	19.1	2.5
Nahan	0.89	3.4	4.5	1.8	0.24
Rajgarh	0.37	1.2	3.0	1.2	0.16
Total	62.5	181.7	299.4	111.2	14.5

DistrictLevel Taluk-wise Data for Solan ; Biomass Class : Agro					
Taluk	Area (kHa)	Crop Production (kT/Yr)	Biomass Generation (kT/Yr)	Biomass Surplus (kT/Yr)	Power Potential (MWe)
Nalagarh	39.3	72.5	150.3	52.7	6.8
Kasauli	9.5	20.4	41.6	15.8	2.1
Solan	2.6	5.4	12.9	5.0	0.67
Kandaghat	1.6	3.3	8.0	3.2	0.43
Arki	1.0	2.1	4.7	1.9	0.25
Total	54.0	103.6	217.5	78.7	10.2

DistrictLevel Taluk-wise Data for Una ; Biomass Class : Agro					
Taluk	Area (kHa)	Crop Production (kT/Yr)	Biomass Generation (kT/Yr)	Biomass Surplus (kT/Yr)	Power Potential (MWe)
Una	51.3	112.8	218.0	72.0	9.4
Amb	13.7	29.7	62.4	24.2	3.1
Total	65.1	142.4	280.4	96.3	12.5

Taluk Level Residue Wise

Taluk level Residue-wise Data for Bilaspur ; Biomass Class : Agro						
Crop	Residue	Area (kHa)	Crop Production (kT/Yr)	Biomass Generation (kT/Yr)	Biomass Surplus (kT/Yr)	Power Potential (MWe)
Maize	Stalks	22.9	44.7	89.5	35.8	4.7
Wheat	Stalks	25.5	44.2	66.4	13.3	1.7
Maize	Cobs	22.9	44.7	22.4	11.2	1.6
Wheat	Pod	25.5	44.2	13.3	2.7	0.37
Paddy	Straw	0.97	1.5	2.3	1.9	0.20
Others	Others	0.0066	0.0088	0.32	0.25	0.027
Total		49.3	90.5	194.1	65.0	8.5

Taluk level Residue-wise Data for Ghumarwin ; Biomass Class : Agro						
Crop	Residue	Area (kHa)	Crop Production (kT/Yr)	Biomass Generation (kT/Yr)	Biomass Surplus (kT/Yr)	Power Potential (MWe)
Maize	Stalks	3.6	7.1	14.2	5.7	0.74
Maize	Cobs	3.6	7.1	3.5	1.8	0.25
Paddy	Straw	0.56	0.90	1.3	1.1	0.12
Wheat	Stalks	1.6	2.7	4.0	0.81	0.11
Others	Others	0.40	0.91	1.5	0.36	0.046
Total		6.1	11.6	24.7	9.7	1.3

Taluk level Residue-wise Data for Bhamaur ; Biomass Class : Agro						
Crop	Residue	Area (kHa)	Crop Production (kT/Yr)	Biomass Generation (kT/Yr)	Biomass Surplus (kT/Yr)	Power Potential (MWe)
Maize	Stalks	5.1	11.8	23.6	9.4	1.2
Maize	Cobs	5.1	11.8	5.9	3.0	0.41
Paddy	Straw	0.74	1.1	1.6	1.3	0.14
Others	Others	0.62	0.95	1.9	0.51	0.064
Total		6.4	13.8	33.0	14.2	1.8

Taluk level Residue-wise Data for Bhattiyat ; Biomass Class : Agro						
Crop	Residue	Area (kHa)	Crop Production (kT/Yr)	Biomass Generation (kT/Yr)	Biomass Surplus (kT/Yr)	Power Potential (MWe)
Maize	Stalks	1.5	3.6	7.2	2.9	0.37
Maize	Cobs	1.5	3.6	1.8	0.90	0.13
Wheat	Stalks	1.6	2.4	3.7	0.73	0.095
Potato	Leaves	0.61	5.5	4.2	0.42	0.058
Others	Others	0	0	1.0	0.20	0.028
Total		3.7	11.5	17.8	5.1	0.68

Taluk level Residue-wise Data for Chamba ; Biomass Class : Agro						
Crop	Residue	Area (kHa)	Crop Production (kT/Yr)	Biomass Generation (kT/Yr)	Biomass Surplus (kT/Yr)	Power Potential (MWe)
Maize	Stalks	16.2	37.7	75.3	30.1	3.9
Maize	Cobs	16.2	37.7	18.8	9.4	1.3
Wheat	Stalks	7.4	11.4	17.2	3.4	0.45
Wheat	Pod	7.4	11.4	3.4	0.69	0.096
Others	Others	0.41	0.55	0.71	0.071	0.0093
Total		24.1	49.7	115.5	43.7	5.8

Taluk level Residue-wise Data for Chaurah ; Biomass Class : Agro						
Crop	Residue	Area (kHa)	Crop Production (kT/Yr)	Biomass Generation (kT/Yr)	Biomass Surplus (kT/Yr)	Power Potential (MWe)
Maize	Stalks	2.0	4.6	9.2	3.7	0.48
Paddy	Straw	2.1	3.0	4.5	3.6	0.40
Maize	Cobs	2.0	4.6	2.3	1.2	0.16
Wheat	Stalks	1.8	2.7	4.0	0.81	0.11
Paddy	Husk	2.1	3.0	0.61	0.48	0.053
Others	Others	0	0	0.81	0.16	0.023
Total		5.9	10.3	21.5	9.9	1.2

Taluk level Residue-wise Data for Pangi ; Biomass Class : Agro						
Crop	Residue	Area (kHa)	Crop Production (kT/Yr)	Biomass Generation (kT/Yr)	Biomass Surplus (kT/Yr)	Power Potential (MWe)
Wheat	Stalks	4.5	6.8	10.3	2.1	0.27
Barley	Stalks	3.5	4.6	6.0	0.60	0.079
Maize	Stalks	0.31	0.73	1.5	0.58	0.076
Wheat	Pod	4.5	6.8	2.1	0.41	0.057
Others	Others	0	0	0.36	0.18	0.025
Total		8.2	12.2	20.2	3.8	0.50

Taluk level Residue-wise Data for Saluni ; Biomass Class : Agro						
Crop	Residue	Area (kHa)	Crop Production (kT/Yr)	Biomass Generation (kT/Yr)	Biomass Surplus (kT/Yr)	Power Potential (MWe)
Wheat	Stalks	5.2	7.9	11.9	2.4	0.31
Maize	Stalks	0.28	0.64	1.3	0.51	0.067
Wheat	Pod	5.2	7.9	2.4	0.48	0.067
Others	Others	0	0	0.32	0.16	0.022
Total		5.4	8.6	15.9	3.5	0.47

Taluk level Residue-wise Data for Barsar ; Biomass Class : Agro						
Crop	Residue	Area (kHa)	Crop Production (kT/Yr)	Biomass Generation (kT/Yr)	Biomass Surplus (kT/Yr)	Power Potential (MWe)
Maize	Stalks	6.1	11.4	22.7	9.1	1.2
Maize	Cobs	6.1	11.4	5.7	2.8	0.40
Wheat	Stalks	3.2	3.8	5.7	1.1	0.15
Paddy	Straw	0.60	0.96	1.4	1.2	0.13
Others	Others	0.0035	0.0071	1.3	0.38	0.049
Total		9.9	16.1	36.9	14.6	1.9

Taluk level Residue-wise Data for Bhoranj ; Biomass Class : Agro						
Crop	Residue	Area (kHa)	Crop Production (kT/Yr)	Biomass Generation (kT/Yr)	Biomass Surplus (kT/Yr)	Power Potential (MWe)
Wheat	Stalks	9.5	11.5	17.3	3.5	0.45
Paddy	Straw	1.6	2.6	3.9	3.1	0.34
Wheat	Pod	9.5	11.5	3.5	0.69	0.097
Others	Others	0.098	0.49	0.55	0.42	0.047
Total		11.3	14.6	25.2	7.7	0.94

Taluk level Residue-wise Data for Hamirpur ; Biomass Class : Agro						
Crop	Residue	Area (kHa)	Crop Production (kT/Yr)	Biomass Generation (kT/Yr)	Biomass Surplus (kT/Yr)	Power Potential (MWe)
Maize	Stalks	15.5	28.7	57.5	23.0	3.0
Maize	Cobs	15.5	28.7	14.4	7.2	1.0
Wheat	Stalks	20.7	25.0	37.6	7.5	0.98
Wheat	Pod	20.7	25.0	7.5	1.5	0.21
Paddy	Straw	0.29	0.46	0.69	0.55	0.061
Others	Others	0.10	0.22	0.35	0.099	0.011
Total		36.6	54.5	118.0	39.9	5.3

Taluk level Residue-wise Data for Nadaun ; Biomass Class : Agro						
Crop	Residue	Area (kHa)	Crop Production (kT/Yr)	Biomass Generation (kT/Yr)	Biomass Surplus (kT/Yr)	Power Potential (MWe)
Maize	Stalks	10.6	19.7	39.3	15.7	2.0
Maize	Cobs	10.6	19.7	9.8	4.9	0.69
Wheat	Stalks	2.3	2.7	4.1	0.82	0.11
Others	Others	0	0	0.82	0.16	0.023
Total		12.9	22.4	54.1	21.6	2.9

Taluk level Residue-wise Data for Baijnath ; Biomass Class : Agro						
Crop	Residue	Area (kHa)	Crop Production (kT/Yr)	Biomass Generation (kT/Yr)	Biomass Surplus (kT/Yr)	Power Potential (MWe)
Maize	Stalks	1.1	2.0	3.9	1.6	0.20
Wheat	Stalks	3.3	5.1	7.6	1.5	0.20
Paddy	Straw	0.70	1.0	1.5	1.2	0.13
Others	Others	0.49	8.2	2.1	0.55	0.072
Maize	Cobs	1.1	2.0	0.98	0.49	0.069
Total		5.7	16.3	16.1	5.3	0.68

Taluk level Residue-wise Data for Baroh ; Biomass Class : Agro						
Crop	Residue	Area (kHa)	Crop Production (kT/Yr)	Biomass Generation (kT/Yr)	Biomass Surplus (kT/Yr)	Power Potential (MWe)
Paddy	Straw	4.2	6.1	9.2	7.3	0.81
Paddy	Husk	4.2	6.1	1.2	0.98	0.11
Others	Others	0.38	0.62	1.4	0.55	0.072
Total		4.6	6.7	11.8	8.8	0.99

Taluk level Residue-wise Data for Dera Gopipur ; Biomass Class : Agro						
Crop	Residue	Area (kHa)	Crop Production (kT/Yr)	Biomass Generation (kT/Yr)	Biomass Surplus (kT/Yr)	Power Potential (MWe)
Paddy	Straw	11.6	16.8	25.2	20.2	2.2
Wheat	Stalks	31.8	48.6	72.9	14.6	1.9
Maize	Stalks	6.8	11.7	23.3	9.3	1.2
Maize	Cobs	6.8	11.7	5.8	2.9	0.41
Wheat	Pod	31.8	48.6	14.6	2.9	0.41
Paddy	Husk	11.6	16.8	3.4	2.7	0.30
Others	Others	0.062	0.076	0.099	0.0099	0.0013
Total		50.3	77.2	145.4	52.6	6.4

Taluk level Residue-wise Data for Dharmshala ; Biomass Class : Agro						
Crop	Residue	Area (kHa)	Crop Production (kT/Yr)	Biomass Generation (kT/Yr)	Biomass Surplus (kT/Yr)	Power Potential (MWe)
Maize	Stalks	5.1	8.8	17.5	7.0	0.91
Maize	Cobs	5.1	8.8	4.4	2.2	0.31
Wheat	Stalks	4.5	6.9	10.3	2.1	0.27
Paddy	Straw	0.35	0.50	0.76	0.61	0.067
Wheat	Pod	4.5	6.9	2.1	0.41	0.058
Others	Others	0	0	0.10	0.081	0.0089
Total		10.0	16.2	35.2	12.4	1.6

Taluk level Residue-wise Data for Indora ; Biomass Class : Agro						
Crop	Residue	Area (kHa)	Crop Production (kT/Yr)	Biomass Generation (kT/Yr)	Biomass Surplus (kT/Yr)	Power Potential (MWe)
Paddy	Straw	5.3	7.7	11.6	9.3	1.0
Wheat	Stalks	8.6	13.1	19.7	3.9	0.51
Maize	Stalks	2.8	4.9	9.7	3.9	0.51
Maize	Cobs	2.8	4.9	2.4	1.2	0.17
Paddy	Husk	5.3	7.7	1.5	1.2	0.14
Wheat	Pod	8.6	13.1	3.9	0.79	0.11
Total		16.8	25.7	48.9	20.4	2.5

Taluk level Residue-wise Data for Jaisinghpur ; Biomass Class : Agro						
Crop	Residue	Area (kHa)	Crop Production (kT/Yr)	Biomass Generation (kT/Yr)	Biomass Surplus (kT/Yr)	Power Potential (MWe)
Maize	Stalks	3.0	5.2	10.4	4.1	0.54
Wheat	Stalks	4.9	7.5	11.3	2.3	0.29
Paddy	Straw	1.3	1.9	2.8	2.3	0.25
Maize	Cobs	3.0	5.2	2.6	1.3	0.18
Wheat	Pod	4.9	7.5	2.3	0.45	0.063
Others	Others	0	0	0.38	0.30	0.033
Total		9.3	14.6	29.7	10.7	1.4

Taluk level Residue-wise Data for Jaswan ; Biomass Class : Agro						
Crop	Residue	Area (kHa)	Crop Production (kT/Yr)	Biomass Generation (kT/Yr)	Biomass Surplus (kT/Yr)	Power Potential (MWe)
Maize	Stalks	2.0	3.4	6.8	2.7	0.36
Wheat	Stalks	4.4	6.7	10.1	2.0	0.26
Maize	Cobs	2.0	3.4	1.7	0.85	0.12
Paddy	Straw	0.34	0.50	0.75	0.60	0.066
Wheat	Pod	4.4	6.7	2.0	0.40	0.056
Others	Others	0.49	0.60	0.88	0.16	0.019
Total		7.2	11.2	22.2	6.8	0.88

Taluk level Residue-wise Data for Jawali ; Biomass Class : Agro						
Crop	Residue	Area (kHa)	Crop Production (kT/Yr)	Biomass Generation (kT/Yr)	Biomass Surplus (kT/Yr)	Power Potential (MWe)
Maize	Stalks	11.8	20.2	40.4	16.2	2.1
Maize	Cobs	11.8	20.2	10.1	5.0	0.71
Paddy	Straw	1.8	2.6	3.9	3.1	0.34
Wheat	Stalks	5.1	7.7	11.6	2.3	0.30
Wheat	Pod	5.1	7.7	2.3	0.46	0.065
Others	Others	0.021	0.35	0.54	0.42	0.046
Total		18.7	30.9	68.9	27.5	3.6

Taluk level Residue-wise Data for Kangra ; Biomass Class : Agro						
Crop	Residue	Area (kHa)	Crop Production (kT/Yr)	Biomass Generation (kT/Yr)	Biomass Surplus (kT/Yr)	Power Potential (MWe)
Maize	Stalks	12.2	20.8	41.5	16.6	2.2
Wheat	Stalks	16.1	24.6	36.9	7.4	0.96
Paddy	Straw	4.2	6.0	9.0	7.2	0.79
Maize	Cobs	12.2	20.8	10.4	5.2	0.73
Wheat	Pod	16.1	24.6	7.4	1.5	0.21
Paddy	Husk	4.2	6.0	1.2	0.96	0.11
Others	Others	0.10	0.20	0.40	0.040	0.0052
Total		32.5	51.6	106.8	38.9	5.0

Taluk level Residue-wise Data for Nurpur ; Biomass Class : Agro						
Crop	Residue	Area (kHa)	Crop Production (kT/Yr)	Biomass Generation (kT/Yr)	Biomass Surplus (kT/Yr)	Power Potential (MWe)
Maize	Stalks	9.8	16.8	33.5	13.4	1.7
Paddy	Straw	5.0	7.2	10.8	8.6	0.95
Maize	Cobs	9.8	16.8	8.4	4.2	0.59
Wheat	Stalks	8.9	13.6	20.4	4.1	0.53
Paddy	Husk	5.0	7.2	1.4	1.2	0.13
Wheat	Pod	8.9	13.6	4.1	0.82	0.11
Barley	Stalks	2.5	3.1	4.0	0.40	0.052
Total		26.2	40.7	82.7	32.7	4.1

Taluk level Residue-wise Data for Palampur ; Biomass Class : Agro						
Crop	Residue	Area (kHa)	Crop Production (kT/Yr)	Biomass Generation (kT/Yr)	Biomass Surplus (kT/Yr)	Power Potential (MWe)
Maize	Stalks	4.7	7.9	15.9	6.4	0.83
Wheat	Stalks	7.6	11.7	17.5	3.5	0.46
Paddy	Straw	2.0	3.0	4.4	3.6	0.39
Maize	Cobs	4.7	7.9	4.0	2.0	0.28
Wheat	Pod	7.6	11.7	3.5	0.70	0.098
Paddy	Husk	2.0	3.0	0.59	0.47	0.052
Total		14.3	22.6	45.9	16.6	2.1

Taluk level Residue-wise Data for Morang ; Biomass Class : Agro						
Crop	Residue	Area (kHa)	Crop Production (kT/Yr)	Biomass Generation (kT/Yr)	Biomass Surplus (kT/Yr)	Power Potential (MWe)
Others	Others	0.36	0.54	0.98	0.20	0.026
Total		0.36	0.54	0.98	0.20	0.026

Taluk level Residue-wise Data for Nichar ; Biomass Class : Agro						
Crop	Residue	Area (kHa)	Crop Production (kT/Yr)	Biomass Generation (kT/Yr)	Biomass Surplus (kT/Yr)	Power Potential (MWe)
Maize	Stalks	0.41	0.91	1.8	0.73	0.095
Others	Others	0	0	0.46	0.23	0.032
Total		0.41	0.91	2.3	0.96	0.13

Taluk level Residue-wise Data for Sangla ; Biomass Class : Agro						
Crop	Residue	Area (kHa)	Crop Production (kT/Yr)	Biomass Generation (kT/Yr)	Biomass Surplus (kT/Yr)	Power Potential (MWe)
Others	Others	1.4	2.0	2.6	0.27	0.035
Total		1.4	2.0	2.6	0.27	0.035

Taluk level Residue-wise Data for Ani ; Biomass Class : Agro						
Crop	Residue	Area (kHa)	Crop Production (kT/Yr)	Biomass Generation (kT/Yr)	Biomass Surplus (kT/Yr)	Power Potential (MWe)
Paddy	Straw	0.40	0.52	0.77	0.62	0.068
Others	Others	0.81	1.3	2.3	0.50	0.066
Maize	Stalks	0.19	0.56	1.1	0.45	0.058
Total		1.4	2.3	4.2	1.6	0.19

Taluk level Residue-wise Data for Banjar ; Biomass Class : Agro						
Crop	Residue	Area (kHa)	Crop Production (kT/Yr)	Biomass Generation (kT/Yr)	Biomass Surplus (kT/Yr)	Power Potential (MWe)
Maize	Stalks	9.6	27.6	55.3	22.1	2.9
Maize	Cobs	9.6	27.6	13.8	6.9	0.97
Wheat	Stalks	2.5	4.2	6.3	1.3	0.16
Paddy	Straw	0.73	0.95	1.4	1.1	0.12
Others	Others	1.4	2.0	4.1	0.67	0.086
Total		14.2	34.8	80.9	32.1	4.2

Taluk level Residue-wise Data for Kullu ; Biomass Class : Agro						
Crop	Residue	Area (kHa)	Crop Production (kT/Yr)	Biomass Generation (kT/Yr)	Biomass Surplus (kT/Yr)	Power Potential (MWe)
Maize	Stalks	3.9	11.3	22.5	9.0	1.2
Wheat	Stalks	17.8	29.8	44.6	8.9	1.2
Maize	Cobs	3.9	11.3	5.6	2.8	0.39
Wheat	Pod	17.8	29.8	8.9	1.8	0.25
Paddy	Straw	0.60	0.78	1.2	0.93	0.10
Others	Others	1.6	2.4	3.3	0.44	0.055
Total		24.0	44.2	86.2	23.9	3.1

Taluk level Residue-wise Data for Nermand ; Biomass Class : Agro						
Crop	Residue	Area (kHa)	Crop Production (kT/Yr)	Biomass Generation (kT/Yr)	Biomass Surplus (kT/Yr)	Power Potential (MWe)
Maize	Stalks	1.3	3.8	7.7	3.1	0.40
Maize	Cobs	1.3	3.8	1.9	0.96	0.13
Others	Others	0.75	1.2	2.1	0.38	0.050
Total		2.1	5.1	11.7	4.4	0.58

Taluk level Residue-wise Data for Lahul ; Biomass Class : Agro						
Crop	Residue	Area (kHa)	Crop Production (kT/Yr)	Biomass Generation (kT/Yr)	Biomass Surplus (kT/Yr)	Power Potential (MWe)
Others	Others	0.86	0.79	1.1	0.13	0.017
Total		0.86	0.79	1.1	0.13	0.017

Taluk level Residue-wise Data for Spiti ; Biomass Class : Agro						
Crop	Residue	Area (kHa)	Crop Production (kT/Yr)	Biomass Generation (kT/Yr)	Biomass Surplus (kT/Yr)	Power Potential (MWe)
Others	Others	0.0011	0.00093	0.0012	0.00012	1.57E-05
Total		0.0011	0.00093	0.0012	0.00012	1.57E-05

Taluk level Residue-wise Data for Chachyot ; Biomass Class : Agro						
Crop	Residue	Area (kHa)	Crop Production (kT/Yr)	Biomass Generation (kT/Yr)	Biomass Surplus (kT/Yr)	Power Potential (MWe)
Maize	Stalks	3.8	11.2	22.4	9.0	1.2
Wheat	Stalks	9.6	15.5	23.2	4.6	0.60
Maize	Cobs	3.8	11.2	5.6	2.8	0.39
Wheat	Pod	9.6	15.5	4.6	0.93	0.13
Others	Others	0.35	0.60	1.2	0.12	0.015
Total		13.8	27.3	57.0	17.5	2.3

Taluk level Residue-wise Data for Jogindarnagar ; Biomass Class : Agro						
Crop	Residue	Area (kHa)	Crop Production (kT/Yr)	Biomass Generation (kT/Yr)	Biomass Surplus (kT/Yr)	Power Potential (MWe)
Paddy	Straw	18.4	27.6	41.3	33.1	3.6
Maize	Stalks	4.8	14.0	28.0	11.2	1.5
Maize	Cobs	4.8	14.0	7.0	3.5	0.49
Paddy	Husk	18.4	27.6	5.5	4.4	0.49
Wheat	Stalks	4.9	8.0	11.9	2.4	0.31
Wheat	Pod	4.9	8.0	2.4	0.48	0.067
Others	Others	0.47	0.66	0.86	0.086	0.011
Total		28.6	50.2	97.0	55.1	6.5

Taluk level Residue-wise Data for Karsog ; Biomass Class : Agro						
Crop	Residue	Area (kHa)	Crop Production (kT/Yr)	Biomass Generation (kT/Yr)	Biomass Surplus (kT/Yr)	Power Potential (MWe)
Maize	Stalks	2.9	8.4	16.7	6.7	0.87
Wheat	Stalks	8.6	13.9	20.8	4.2	0.54
Maize	Cobs	2.9	8.4	4.2	2.1	0.29
Wheat	Pod	8.6	13.9	4.2	0.83	0.12
Others	Others	1.1	1.5	2.0	0.20	0.025
Total		12.6	23.7	47.8	14.0	1.8

Taluk level Residue-wise Data for Mandi ; Biomass Class : Agro						
Crop	Residue	Area (kHa)	Crop Production (kT/Yr)	Biomass Generation (kT/Yr)	Biomass Surplus (kT/Yr)	Power Potential (MWe)
Maize	Stalks	12.5	36.5	73.0	29.2	3.8
Maize	Cobs	12.5	36.5	18.3	9.1	1.3
Wheat	Stalks	12.7	20.4	30.5	6.1	0.79
Wheat	Pod	12.7	20.4	6.1	1.2	0.17
Others	Others	0.20	0.31	0.52	0.052	0.0067
Total		25.4	57.2	128.5	45.7	6.0

Taluk level Residue-wise Data for Sarkaghat ; Biomass Class : Agro						
Crop	Residue	Area (kHa)	Crop Production (kT/Yr)	Biomass Generation (kT/Yr)	Biomass Surplus (kT/Yr)	Power Potential (MWe)
Maize	Stalks	17.2	50.2	100.4	40.2	5.2
Maize	Cobs	17.2	50.2	25.1	12.6	1.8
Wheat	Stalks	15.6	25.0	37.6	7.5	0.98
Wheat	Pod	15.6	25.0	7.5	1.5	0.21
Others	Others	0.14	0.20	0.25	0.025	0.0033
Total		32.9	75.4	170.8	61.8	8.2

Taluk level Residue-wise Data for Sundar Nagar ; Biomass Class : Agro						
Crop	Residue	Area (kHa)	Crop Production (kT/Yr)	Biomass Generation (kT/Yr)	Biomass Surplus (kT/Yr)	Power Potential (MWe)
Wheat	Stalks	10.3	16.6	24.9	5.0	0.65
Maize	Stalks	0.91	2.7	5.3	2.1	0.28
Wheat	Pod	10.3	16.6	5.0	1.00	0.14
Maize	Cobs	0.91	2.7	1.3	0.66	0.093
Paddy	Straw	0.45	0.68	1.0	0.82	0.090
Others	Others	0.54	0.77	1.1	0.21	0.025
Total		12.3	20.7	38.7	9.8	1.3

Taluk level Residue-wise Data for Thunag ; Biomass Class : Agro						
Crop	Residue	Area (kHa)	Crop Production (kT/Yr)	Biomass Generation (kT/Yr)	Biomass Surplus (kT/Yr)	Power Potential (MWe)
Maize	Stalks	5.0	14.6	29.2	11.7	1.5
Maize	Cobs	5.0	14.6	7.3	3.7	0.51
Wheat	Stalks	6.8	10.9	16.4	3.3	0.43
Paddy	Straw	2.0	2.9	4.4	3.5	0.39
Wheat	Pod	6.8	10.9	3.3	0.65	0.092
Paddy	Husk	2.0	2.9	0.59	0.47	0.052
Others	Others	2.0	2.8	3.7	0.37	0.048
Total		15.8	31.3	64.9	23.6	3.0

Taluk level Residue-wise Data for Chaupal ; Biomass Class : Agro						
Crop	Residue	Area (kHa)	Crop Production (kT/Yr)	Biomass Generation (kT/Yr)	Biomass Surplus (kT/Yr)	Power Potential (MWe)
Maize	Stalks	1.1	2.5	5.1	2.0	0.26
Maize	Cobs	1.1	2.5	1.3	0.64	0.089
Total		1.1	2.5	6.4	2.7	0.35

Taluk level Residue-wise Data for Chirgaon ; Biomass Class : Agro						
Crop	Residue	Area (kHa)	Crop Production (kT/Yr)	Biomass Generation (kT/Yr)	Biomass Surplus (kT/Yr)	Power Potential (MWe)
Maize	Stalks	0.88	2.0	4.0	1.6	0.21
Maize	Cobs	0.88	2.0	1.0	0.50	0.071
Others	Others	0.98	0.94	1.2	0.12	0.016
Total		1.9	3.0	6.3	2.2	0.30

Taluk level Residue-wise Data for Jubbal ; Biomass Class : Agro						
Crop	Residue	Area (kHa)	Crop Production (kT/Yr)	Biomass Generation (kT/Yr)	Biomass Surplus (kT/Yr)	Power Potential (MWe)
Wheat	Stalks	10.0	11.3	17.0	3.4	0.44
Wheat	Pod	10.0	11.3	3.4	0.68	0.095
Others	Others	0.18	0.40	1.0	0.42	0.056
Total		10.1	11.7	21.4	4.5	0.59

Taluk level Residue-wise Data for Kotkhai ; Biomass Class : Agro						
Crop	Residue	Area (kHa)	Crop Production (kT/Yr)	Biomass Generation (kT/Yr)	Biomass Surplus (kT/Yr)	Power Potential (MWe)
Maize	Stalks	0.24	0.54	1.1	0.43	0.056
Others	Others	0.081	0.092	0.43	0.26	0.033
Total		0.32	0.63	1.5	0.69	0.089

Taluk level Residue-wise Data for Kumharsain ; Biomass Class : Agro						
Crop	Residue	Area (kHa)	Crop Production (kT/Yr)	Biomass Generation (kT/Yr)	Biomass Surplus (kT/Yr)	Power Potential (MWe)
Maize	Stalks	2.3	5.3	10.6	4.2	0.55
Maize	Cobs	2.3	5.3	2.6	1.3	0.19
Others	Others	2.6	2.7	4.0	0.58	0.076
Total		4.9	7.9	17.2	6.1	0.81

Taluk level Residue-wise Data for Rampur ; Biomass Class : Agro						
Crop	Residue	Area (kHa)	Crop Production (kT/Yr)	Biomass Generation (kT/Yr)	Biomass Surplus (kT/Yr)	Power Potential (MWe)
Maize	Stalks	3.1	7.1	14.3	5.7	0.74
Maize	Cobs	3.1	7.1	3.6	1.8	0.25
Total		3.1	7.1	17.8	7.5	0.99

Taluk level Residue-wise Data for Rohru ; Biomass Class : Agro						
Crop	Residue	Area (kHa)	Crop Production (kT/Yr)	Biomass Generation (kT/Yr)	Biomass Surplus (kT/Yr)	Power Potential (MWe)
Maize	Stalks	5.1	11.6	23.3	9.3	1.2
Paddy	Straw	2.9	3.3	4.9	3.9	0.43
Maize	Cobs	5.1	11.6	5.8	2.9	0.41
Paddy	Husk	2.9	3.3	0.65	0.52	0.058
Others	Others	2.0	1.9	2.5	0.25	0.033
Total		10.0	16.8	37.2	16.9	2.1

Taluk level Residue-wise Data for Shimla Rural ; Biomass Class : Agro						
Crop	Residue	Area (kHa)	Crop Production (kT/Yr)	Biomass Generation (kT/Yr)	Biomass Surplus (kT/Yr)	Power Potential (MWe)
Others	Others	0.065	0.12	0.29	0.12	0.016
Total		0.065	0.12	0.29	0.12	0.016

Taluk level Residue-wise Data for Shimla Urban ; Biomass Class : Agro						
Crop	Residue	Area (kHa)	Crop Production (kT/Yr)	Biomass Generation (kT/Yr)	Biomass Surplus (kT/Yr)	Power Potential (MWe)
Maize	Stalks	0.38	0.88	1.8	0.70	0.092
Wheat	Stalks	1.3	1.5	2.3	0.46	0.059
Others	Others	0	0	0.90	0.31	0.044
Total		1.7	2.4	4.9	1.5	0.19

Taluk level Residue-wise Data for Suni ; Biomass Class : Agro						
Crop	Residue	Area (kHa)	Crop Production (kT/Yr)	Biomass Generation (kT/Yr)	Biomass Surplus (kT/Yr)	Power Potential (MWe)
Maize	Stalks	2.4	5.5	11.0	4.4	0.57
Maize	Cobs	2.4	5.5	2.7	1.4	0.19
Wheat	Stalks	1.4	1.6	2.5	0.49	0.064
Others	Others	0	0	0.49	0.098	0.014
Total		3.8	7.1	16.7	6.4	0.84

Taluk level Residue-wise Data for Theog ; Biomass Class : Agro						
Crop	Residue	Area (kHa)	Crop Production (kT/Yr)	Biomass Generation (kT/Yr)	Biomass Surplus (kT/Yr)	Power Potential (MWe)
Maize	Stalks	1.3	3.0	6.0	2.4	0.31
Wheat	Stalks	6.5	7.4	11.1	2.2	0.29
Maize	Cobs	1.3	3.0	1.5	0.74	0.10
Wheat	Pod	6.5	7.4	2.2	0.44	0.062
Others	Others	0.18	0.092	0.14	0.014	0.0018
Total		8.0	10.5	20.9	5.8	0.77

Taluk level Residue-wise Data for Nahana ; Biomass Class : Agro						
Crop	Residue	Area (kHa)	Crop Production (kT/Yr)	Biomass Generation (kT/Yr)	Biomass Surplus (kT/Yr)	Power Potential (MWe)
Maize	Stalks	0.54	1.7	3.4	1.4	0.18
Maize	Cobs	0.54	1.7	0.85	0.42	0.059
Others	Others	0.36	1.7	0.23	0.031	0.0042
Total		0.89	3.4	4.5	1.8	0.24

Taluk level Residue-wise Data for Pachhad ; Biomass Class : Agro						
Crop	Residue	Area (kHa)	Crop Production (kT/Yr)	Biomass Generation (kT/Yr)	Biomass Surplus (kT/Yr)	Power Potential (MWe)
Wheat	Stalks	17.4	28.8	43.2	8.6	1.1
Maize	Stalks	2.6	8.3	16.7	6.7	0.87
Maize	Cobs	2.6	8.3	4.2	2.1	0.29
Wheat	Pod	17.4	28.8	8.6	1.7	0.24
Others	Others	0.097	0.097	0.19	0.019	0.0025
Total		20.2	37.2	72.8	19.1	2.5

Taluk level Residue-wise Data for Paonta ; Biomass Class : Agro						
Crop	Residue	Area (kHa)	Crop Production (kT/Yr)	Biomass Generation (kT/Yr)	Biomass Surplus (kT/Yr)	Power Potential (MWe)
Maize	Stalks	11.8	37.3	74.6	29.9	3.9
Maize	Cobs	11.8	37.3	18.7	9.3	1.3
Paddy	Straw	0.60	0.91	1.4	1.1	0.12
Others	Others	0.13	0.14	0.37	0.16	0.018
Total		12.5	38.4	95.0	40.4	5.3

Taluk level Residue-wise Data for Rajgarh ; Biomass Class : Agro						
Crop	Residue	Area (kHa)	Crop Production (kT/Yr)	Biomass Generation (kT/Yr)	Biomass Surplus (kT/Yr)	Power Potential (MWe)
Maize	Stalks	0.37	1.2	2.4	0.94	0.12
Others	Others	0.00045	0.00045	0.59	0.30	0.041
Total		0.37	1.2	3.0	1.2	0.16

Taluk level Residue-wise Data for Renuka ; Biomass Class : Agro						
Crop	Residue	Area (kHa)	Crop Production (kT/Yr)	Biomass Generation (kT/Yr)	Biomass Surplus (kT/Yr)	Power Potential (MWe)
Maize	Stalks	4.2	13.4	26.8	10.7	1.4
Wheat	Stalks	10.3	16.9	25.4	5.1	0.66
Maize	Cobs	4.2	13.4	6.7	3.4	0.47
Paddy	Straw	1.9	2.9	4.4	3.5	0.39
Wheat	Pod	10.3	16.9	5.1	1.0	0.14
Sugarcane	Tops & Leaves	1.5	44.3	2.2	0.44	0.062
Paddy	Husk	1.9	2.9	0.59	0.47	0.052
Others	Others	0.0016	0.0016	0.0033	0.00033	4.24E-05
Total		17.9	77.6	71.2	24.6	3.2

Taluk level Residue-wise Data for Shilla ; Biomass Class : Agro						
Crop	Residue	Area (kHa)	Crop Production (kT/Yr)	Biomass Generation (kT/Yr)	Biomass Surplus (kT/Yr)	Power Potential (MWe)
Maize	Stalks	5.3	16.7	33.4	13.3	1.7
Paddy	Straw	2.9	4.5	6.7	5.4	0.59
Maize	Cobs	5.3	16.7	8.3	4.2	0.58
Paddy	Husk	2.9	4.5	0.89	0.71	0.079
Others	Others	2.5	2.8	3.6	0.36	0.047
Total		10.7	24.0	52.9	24.0	3.0

Taluk level Residue-wise Data for Arki ; Biomass Class : Agro						
Crop	Residue	Area (kHa)	Crop Production (kT/Yr)	Biomass Generation (kT/Yr)	Biomass Surplus (kT/Yr)	Power Potential (MWe)
Maize	Stalks	0.70	1.5	3.0	1.2	0.16
Maize	Cobs	0.70	1.5	0.75	0.38	0.053
Others	Others	0.32	0.55	0.97	0.37	0.043
Total		1.0	2.1	4.7	1.9	0.25

Taluk level Residue-wise Data for Kandaghat ; Biomass Class : Agro						
Crop	Residue	Area (kHa)	Crop Production (kT/Yr)	Biomass Generation (kT/Yr)	Biomass Surplus (kT/Yr)	Power Potential (MWe)
Maize	Stalks	1.4	3.0	5.9	2.4	0.31
Maize	Cobs	1.4	3.0	1.5	0.74	0.10
Others	Others	0.19	0.31	0.57	0.11	0.015
Total		1.6	3.3	8.0	3.2	0.43

Taluk level Residue-wise Data for Kasauli ; Biomass Class : Agro						
Crop	Residue	Area (kHa)	Crop Production (kT/Yr)	Biomass Generation (kT/Yr)	Biomass Surplus (kT/Yr)	Power Potential (MWe)
Maize	Stalks	6.3	13.5	27.0	10.8	1.4
Maize	Cobs	6.3	13.5	6.8	3.4	0.47
Wheat	Stalks	2.2	3.7	5.6	1.1	0.15
Others	Others	0.99	3.2	2.3	0.47	0.061
Total		9.5	20.4	41.6	15.8	2.1

Taluk level Residue-wise Data for Nalagarh ; Biomass Class : Agro						
Crop	Residue	Area (kHa)	Crop Production (kT/Yr)	Biomass Generation (kT/Yr)	Biomass Surplus (kT/Yr)	Power Potential (MWe)
Maize	Stalks	13.9	30.0	59.9	24.0	3.1
Wheat	Stalks	20.9	35.0	52.6	10.5	1.4
Maize	Cobs	13.9	30.0	15.0	7.5	1.0
Paddy	Straw	3.4	6.2	9.3	7.5	0.82
Wheat	Pod	20.9	35.0	10.5	2.1	0.29
Paddy	Husk	3.4	6.2	1.2	0.99	0.11
Others	Others	1.2	1.3	1.7	0.19	0.025
Total		39.3	72.5	150.3	52.7	6.8

Taluk level Residue-wise Data for Solan ; Biomass Class : Agro						
Crop	Residue	Area (kHa)	Crop Production (kT/Yr)	Biomass Generation (kT/Yr)	Biomass Surplus (kT/Yr)	Power Potential (MWe)
Maize	Stalks	2.1	4.5	8.9	3.6	0.46
Maize	Cobs	2.1	4.5	2.2	1.1	0.16
Others	Others	0.56	0.94	1.7	0.34	0.045
Total		2.6	5.4	12.9	5.0	0.67

Taluk level Residue-wise Data for Amb ; Biomass Class : Agro						
Crop	Residue	Area (kHa)	Crop Production (kT/Yr)	Biomass Generation (kT/Yr)	Biomass Surplus (kT/Yr)	Power Potential (MWe)
Maize	Stalks	8.1	16.9	33.9	13.6	1.8
Maize	Cobs	8.1	16.9	8.5	4.2	0.59
Wheat	Stalks	4.5	8.8	13.2	2.6	0.34
Paddy	Straw	1.1	2.4	3.6	2.9	0.32
Wheat	Pod	4.5	8.8	2.6	0.53	0.074
Others	Others	0.084	1.5	0.55	0.40	0.044
Total		13.7	29.7	62.4	24.2	3.1

Taluk level Residue-wise Data for Una ; Biomass Class : Agro						
Crop	Residue	Area (kHa)	Crop Production (kT/Yr)	Biomass Generation (kT/Yr)	Biomass Surplus (kT/Yr)	Power Potential (MWe)
Maize	Stalks	21.5	45.0	90.0	36.0	4.7
Wheat	Stalks	27.7	54.9	82.4	16.5	2.1
Maize	Cobs	21.5	45.0	22.5	11.3	1.6
Paddy	Straw	1.6	3.6	5.4	4.3	0.47
Wheat	Pod	27.7	54.9	16.5	3.3	0.46
Paddy	Husk	1.6	3.6	0.72	0.58	0.063
Others	Others	0.52	9.2	0.46	0.092	0.013
Total		51.3	112.8	218.0	72.0	9.4

Note:

Others' contributes to collection of crops whose Power Potential is less than 0.05MWyre. These residues will not be separately listed instead they are aggregated into 'Others'.

The Tolerance for the above data at Taluk level is about 25%. The reside-wise data at taluk level may have a tolerance of more than 25% depending on spatial availability of agro-area and spatial aggregation as compared to statistically reported crop area. District Survey instituted by MNRE [Ministry of New & Renewable Energy] was done and biomass was reported for period beyond 1999 of the States country wide. The updated crop data at the district level is used as an input to construct the Biomass Atlas Enabling spatial extraction of the biomass data tables above.